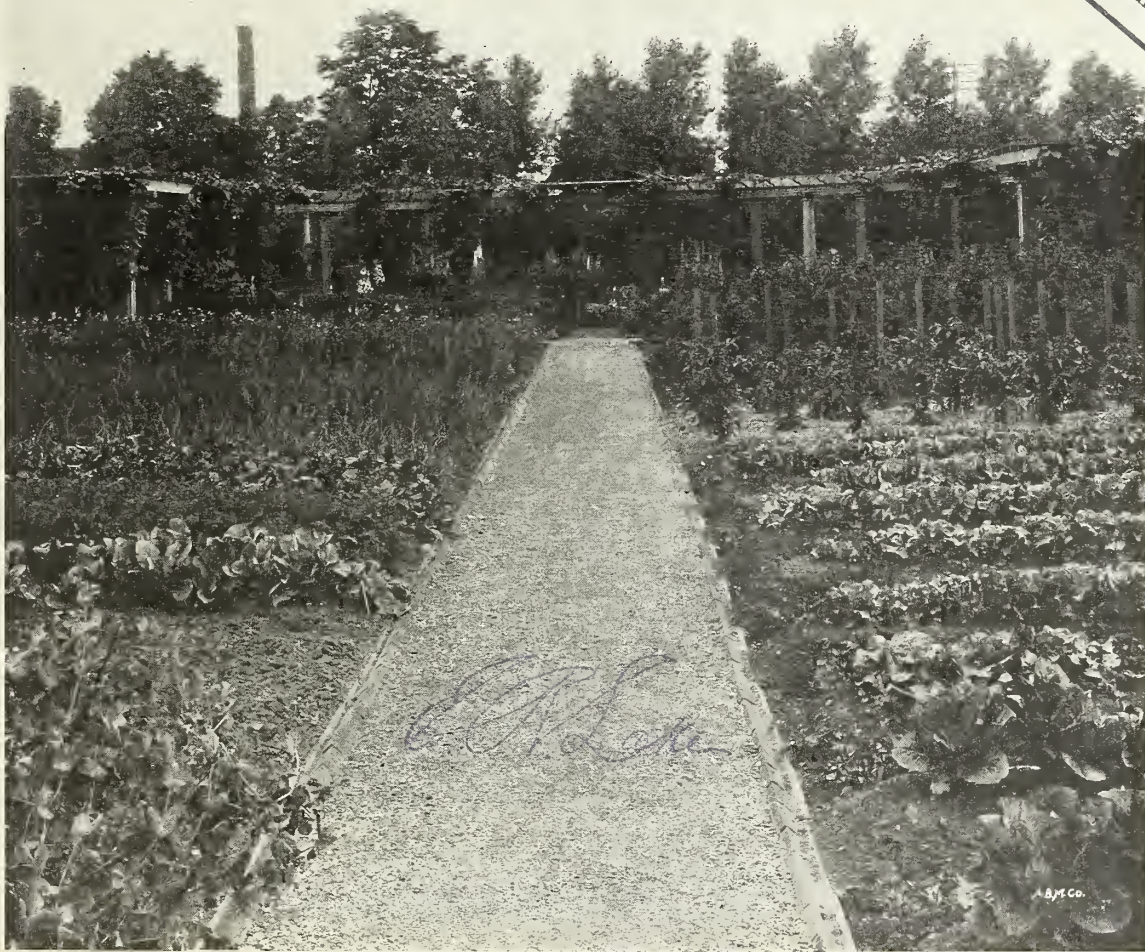


Historic, Archive Document

Do not assume content reflects current scientific knowledge, policies, or practices.

SELECTIONS OF THE BEST SEEDS IN BEST VARIETIES

LIBRARY
U. S. Department of Agriculture



THE SEEDS described in this catalogue are the best varieties for private gardens. All inferior or second rate kinds are excluded, and the quality of the seeds is the best the world produces. The list of varieties includes all the sorts grown in the private garden of J. Wilkinson Elliott, a garden noted for the quality of its produce.

Five Per Cent Discount Allowed on all orders for seeds received by March 1, 1918. After March 1, no discount whatever will be allowed. This discount applies to seeds only, and not to anything offered in our other catalogues. The object of this discount is to make it worth while to order early, so that we can use the same force of order-fillers for seed orders in February and March that are used for filling plant and shrub orders in April and May. On account of partial failure of crops in this country and the war in Europe, the supply of seeds is very low, and people who order late will likely be disappointed.

ELLIOTT NURSERY COMPANY

SEASON
OF 1918

Magee Building 336 Fourth Ave., PITTSBURGH, PA.

TELEPHONES { 2704 Court (City Office)
No. 15-J Springdale (Nurseries and Experimental Grounds)

FOREWORD



We have added a Seed Department to our business, and it will be conducted with the same methods which have built up for us the largest retail bulb business in America. Only the highest quality of seeds, in the very best varieties, will be handled, and at the lowest prices consistent with the highest quality. We have endeavored to offer as few varieties as possible, but have those varieties include the best of everything, so that the most inexperienced can order from our catalogue without risk of getting inferior sorts. We can see no point in offering hundreds of inferior sorts for the sake of making an imposing catalogue. With the commencing of a seed business in view, we have made many trials of seeds in our private gardens for years, and are beginning the seed business with a practical experience rarely obtained by seedsmen who conduct their business in a city warehouse. Our extensive nurseries near Pittsburgh and in New Jersey give us facilities for the most comprehensive trials.

NOVELTIES. The great advancement of gardening has been made through the introduction of new varieties, but unfortunately not over five per cent of the novelties offered annually are improvements on old varieties, and for this reason the novelties of the season are never to be found in our catalogue. We test all novelties thoroughly before offering them to our customers, and when we do offer a new variety we can guarantee it to be a real improvement on older varieties.

CATALOGUES. We issue five catalogues during the year, all of which will be mailed free on request:

Seed Catalogue, ready January 1.	Shrubs, Hardy Plants, Roses, etc., ready February 1.
Summer-blooming Bulbs, ready January 1.	Bulb Catalogue, ready in May.
Nursery Catalogues of Trees,	Fall Catalogue, ready September 1.

TERMS OF PAYMENT. Our terms of payment are invariably cash on delivery, which does not mean that we ship C. O. D., as we will not do so under any circumstances. We deliver the goods and mail bills at the same time, and expect payment within a few days. People unknown to us will please send references with their order.

FREE DELIVERY

We deliver free by express or Parcel Post all Vegetable and Flower Seeds by the **packet, ounce, or quarter-pound**. Purchasers pay transportation on half-pounds, pounds, pints, quarts, half-pecks, pecks, bushels and barrels, except where specially offered in this Catalogue; also on Farm Seeds. If wanted by Parcel Post, postage according to the following table must be sent.

Beans, Peas and Corn weigh one pound to the pint.

REGARDING PARCEL POST AND EXPRESS

Seeds, plants, bulbs and roots are now admitted to the Parcel Post at zone rates. As there are eight zones in the United States, with varying rates, the difficulty of naming in advance a delivered price on heavy seeds by mail, such as peas, beans and corn is apparent, also on plants, roots and heavy bulbs.

The express companies adopted a new set of rates giving a reduction on seeds, plants, bulbs, roots and fertilizers so that it is desirable to use the express when possible. For the guidance of our customers we append a table of a few of the leading cities showing the zones, Parcel-Post rates, uninsured, for 20 pounds, the limit of weight beyond the 2d zone, and the express rate for the same weight. As a receipt is obtained for each shipment by express it is practical insurance without extra cost, the insurance by Parcel Post being 5 cts. per package extra. On shipments weighing more than 20 pounds, the difference in cost is greater in favor of express. *The charge is the same collect or prepaid.*

The express companies collect carrying charges without extra cost. The collection of postage by Parcel Post entails additional cost, so we recommend the use of the express wherever possible.

Comparison of Parcel Post and Express Rates	Zone from Pittsburgh	Postage for 20 lbs.	Express for 20 lbs.
Albany, N. Y.	4	\$0 83	\$0 38
Atlanta, Ga.	4	83	56
Austin, Texas.	6	1 61	88
Boston, Mass.	4	83	41
Buffalo, N. Y.	2	24	30
Chicago, Ill.	4	83	38
Cincinnati, Ohio	3	44	33
Denver, Colorado.	6	1 61	86
Des Moines, Iowa.	5	1 22	53
Detroit, Michigan.	3	44	35
Indianapolis, Ind.	4	83	36
Philadelphia, Pa.	3	44	33
St. Louis, Mo.	4	83	44
Salt Lake City, Utah.	7	2 01	1 20
San Francisco, Calif.	8	2 40	1 59
Washington, D. C.	3	44	33

and the size limit 72 inches for combined length and largest girth. In most instances the charge by express and freight on greater weights than 10 pounds will be found more economical.

Domestic Parcel-Post Rates Within the United States and Possessions		First Pound (over 8 ozs. rates 1 lb.)	Each Additional Pound or fraction
ZONE	DISTANCE FROM PITTSBURGH		
First	50 miles.	\$0 05	\$0 01
Second	51 to 150 miles.	05	02
Third	151 to 300 miles.	06	02
Fourth	301 to 600 miles.	07	04
Fifth	601 to 1000 miles.	08	06
Sixth	1001 to 1400 miles.	09	08
Seventh	1401 to 1800 miles.	11	10
Eighth	all over 1800 miles.	12	12

Important.—In remitting postage always *add it to the foot of the order as a separate item*—this will help to avoid mistakes.

The local postmaster will inform you what zone you are in from Pittsburgh, if you are in doubt, and you can add for postage accordingly.

Canadian Orders.—Vegetable and flower seeds in packets and ounces we mail into Canada, postage paid; but for other quantities and goods add 12 cts. per pound extra for postage, and to beans, corn and peas, 12 cts. per pint. Limit of weight is 4 pounds 6 ounces for each package. This is rated as a 5-pound package costing 60 cts. for postage. We can also ship to Canada by express or freight, customer paying the transportation charges and assuming any import duties, which on most garden and flower seeds is 25 per cent; most flower bulbs are free.

If goods are wanted by Parcel Post, postage must be added as per table following, except for those we offer to deliver free.

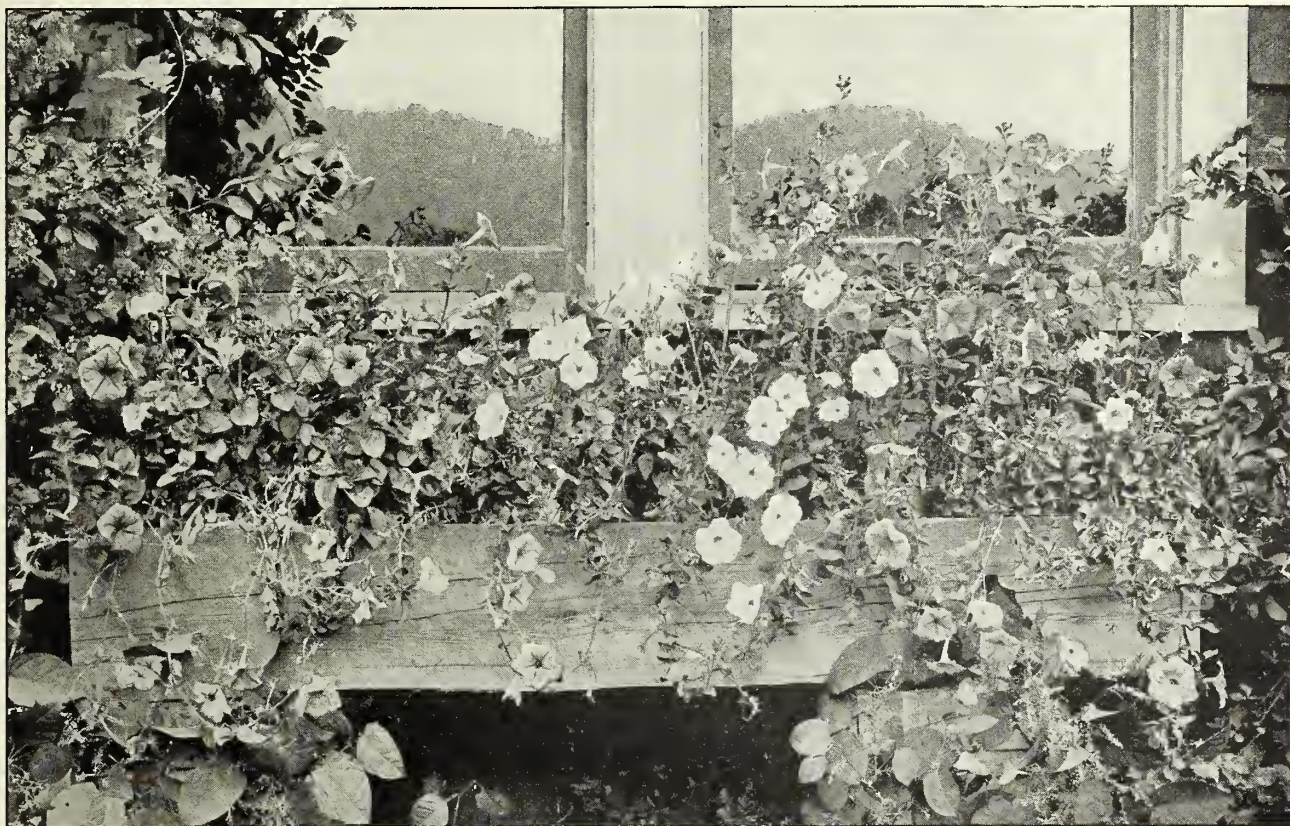
Regarding Domestic Parcel Post within the United States and Possessions—which now includes Seeds, Plants, Bulbs and Roots.

For all merchandise mailable by Parcel Post offered in this catalogue—tools, and accessories, odorless fertilizers, insecticides and fungicides (fluids and poisons excluded)—we have given the packed weight so that extra for postage may be remitted according to zone distances as follows:

Weight Limit.—The weight limit within the 1st and 2d zones is now 50 pounds; within the other zones the weight limit is 20 pounds

ALWAYS KEEP A COPY OF ORDER SENT.—This, too, is very important. Many customers fail to do this, and sometimes forget some of the items ordered, so occasionally complain they have not received certain goods, which we find were not ordered. If goods ordered do not arrive in a reasonable time, send a copy of the order with letter of inquiry, this will be a great help in expediting adjustment.

THE ELLIOTT NURSERY CO. gives no warranty, express or implied, as to description, quality, productiveness, or any other matter of any seeds, bulbs, roots or plants it sends out, and it will not be in any way responsible for the crop. If the purchaser does not accept the goods on these terms, they are at once to be returned.



The Beautiful Karlsruhe Balcony Petunias.

Karlsruhe Balcony Petunias

Seven years ago, while motoring in Germany, we saw the most beautiful Petunias trained on the iron railings of the balconies of the town hall of Karlsruhe. It was the most effective balcony decoration we had ever seen. There was only one color—a lovely, rich violet-blue, a color never seen in Petunias before, and the front of the balconies was a solid sheet of color. Inquiry developed that these remarkable Petunias were grown by a local specialist, but we were unable to obtain any seed until last year, when we got a small quantity from Germany.

We tested these Petunias most thoroughly in the greenhouse, in porch-boxes and in open borders in the garden, and in every position they were most successful and beautiful, and attracted more attention and admiration than any annual we had in our grounds last season. We hope all of our customers will try at least one packet of these remarkable Petunias, and if only one kind is tried, we suggest the violet-blue as the most distinct and striking; but the other colors are effective and lovely. The plants are quite upright in their growth, much more so than other Petunias, and the lovely, large flowers are produced in the greatest profusion throughout the summer and fall, and at this writing, October 29, these Petunias are still in full bloom.

KARLSRUHE BALCONY PETUNIA, rich violet-blue\$0.25
KARLSRUHE BALCONY PETUNIA, dark, rich, velvety carmine, distinct and beautiful..... .25

ONE PACKET EACH OF THE ABOVE FOR 45 CENTS, OR FIVE PACKETS OF ANY OR ALL VARIETIES FOR \$1.00.

IMPERIAL SALPIGLOSSIS

The writer spent some time on the grounds of the large seed growers of England and France last summer, but found nothing so impressive as the Imperial Salpiglossis in the trial grounds of the famous old seed house of Vilmorin, near Paris. These great seedsmen have been working on the improvement of this popular annual for several years, and have produced one of the most beautiful flowering annuals in existence. The colors are rich and beautiful beyond description, fully equal to that of the finest Gloxinias, which they resemble. Of easy culture. Seed should be sown early in the spring in a hotbed or window, and transplanted when weather is settled, or out of doors after danger of frost.

Salpiglossis <i>Gloxinaeflora</i> , yellow with white border	\$0.25
Salpiglossis <i>Gloxinaeflora</i> , magenta, with yellow throat25
Salpiglossis <i>Gloxinaeflora</i> , rosy chamois, carmine center25
Salpiglossis <i>Gloxinaeflora</i> , carmine-red, striped yellow25
Salpiglossis <i>Gloxinaeflora</i> , purple-red, striped yellow25
Salpiglossis <i>Gloxinaeflora</i> , velvety-red...	.25
Salpiglossis <i>Gloxinaeflora</i> , violet.....	.25
Salpiglossis <i>Gloxinaeflora</i> , mixed.....	.25
Five packets assorted of any of the above for	1.00

Vilmorin Single Dahlias

We saw these Dahlias also in Vilmorin trial grounds, and thought them the most beautiful we had ever seen. They were in full flower in July from seed sown in early spring, and can be depended on to flower the same season from spring-sown seed.

Dahlia, single giant flowered.....	Pkt. \$0.15
Dahlia, single miniature mixed15
Dahlia, single dwarf compact, striped mixed15



Elliott's "Early But Good" Pea

We quit growing early Peas in our garden years ago on account of their inferior flavor, preferring to wait for the delicious late varieties such as Telephone and Champion of England; but the grower of the Pea named above sent us some for trial and, after testing it thoroughly in our garden, we think we are very fortunate in being allowed to introduce it, and offer it to our customers. It has strong, vigorous vines of even growth, 20 to 24 inches in height, with luxuriant, dark foliage, bearing pods medium green in color and $3\frac{1}{2}$ to 4 inches in length, broad and pointed at the ends. No variety known will produce more pods, and no pods could possibly shell out better. Fit for table use sixty-one days from planting. Seed green, wrinkled, large size.

Pkt., 10c; lb., 45c; 2 lbs., 80c.

Leonard's Narrow-Grain Evergreen Corn

This new type of Sweet Corn is a stock worked up by S. F. Leonard, after several years of experimenting. In it we feel that we have something vastly superior to the old wide-grain Evergreen. The ear is as large as the Stowell's Evergreen, and averages more rows to the ear. The cob is small in comparison to the size of the ear, and the kernels are very long, narrow and remarkably free from starch. The rows are uniformly straight, and the ear holds its evenness from butt to tip more uniformly than any other type of Evergreen. This Corn, by chemical test, showed more sugar and less starch than any other Corn in cultivation, and is undoubtedly the best of all the large, late Sweet Corns.

Pkt. 10c; lb., 40c; 2 lbs., 70c.

For other varieties of Peas and Corn see pages 7 and 9.

ELLIOTT'S BEST VEGETABLE SEEDS

ASPARAGUS

1 oz. for 50 feet of drill.

Sow seed in April or May, in rows 1 foot apart; thin out the seedlings to about 4 inches apart. When one year old, plant in three rows, in a bed five feet wide, of rich, sandy loam, well dug, with rotted manure added. Set plants 1½ feet apart. It is not advisable to cut any the first season, unless you plant three-year-old roots—these you can cut lightly.

COLOSSAL. Prolific. Pkt., 5c; oz., 15c; ¼ lb., 35c.

PALMETTO. Light green. Pkt., 5c; oz., 15c; ¼ lb., 35c.

Roots of Above. 2-year, 75c for 50; \$1.25 per 100; \$7.50 per 1,000.



Pods very tender, almost stringless, often 8 to 9 inches long. Lb., 45c; 2 lbs., 80c.

KENTUCKY WONDER WAX. Similar to the above, but yellow-podded; it is very meaty, stringless and tender. Lb., 45c; 2 lbs., 80c.

Pole Lima

LARGE WHITE LIMA. A very popular variety; reliable, heavy cropper. The Beans are large, plump, and of delicious flavor. An old sort, but a good one. Lb., 40c; 2 lbs., 70c.

KING OF THE GARDEN. A fine old standard sort. Pods are of enormous size, as well as the beans, which are uniform in size and of excellent quality. Lb., 40c; 2 lbs., 70c.

BEANS

NOTICE.—Owing to an unfavorable season, the crop of Dwarf Beans was almost a total failure, and Dwarf Beans are extremely scarce and high-priced. We can probably fill only early orders for them, and our customers should allow us to substitute similar varieties when sold out of the kinds ordered.

ALL BEANS 10 CENTS PER PACKET.

Dwarf or Bush Green-Podded

1 qt. for 100 feet of drill.

As soon as the soil is warm enough, sow in rows 2½ feet apart, 3 to 4 inches in drills, and about 2 inches deep. Sow every two weeks for succession, and hoe frequently to keep weeds down.

BOUNTIFUL. This is, without doubt, the best flat-podded Green Bush Bean; very tender; it is early, prolific and a continuous bearer. Lb., 45c; 2 lbs., 80c.

EARLIEST RED VALENTINE. A fine, early, round-podded Bean, and a great favorite. 2 lbs., 70c.

GREEN-POD STRINGLESS. The best round-podded variety; absolutely stringless; large, green pods of good length and very fleshy; most prolific bearer. No garden should be without this variety. 45c per lb.; 2 lbs., 80c.

REFUGEE, or 1,000-to-1. This is one of the latest Beans, and is highly esteemed for late planting; very productive and tender, and is largely used for canning. Lb., 40c; 2 lbs., 70c.

Dwarf Wax or Yellow-Podded

1 qt. to 100 feet of drill.

Do not plant these so early as the green varieties.

CURRIE'S ROOT-PROOF WAX. This is a great yielder and an excellent Bean in every respect; pods large, thick, flat and rust-proof; almost stringless. 50c per lb.; 2 lbs., 90c.

GOLDEN WAX IMPROVED. A great improvement on the old Golden Wax, producing fine, long, straight pods, flat and clear yellow in color; erect growing bush, which keeps the pods from touching the ground, thus preventing rust and rot. Lb., 50c; 2 lbs., 90c.

PENCIL-POD BLACK WAX. An improved prolific Black Wax; very productive variety of good quality; round pods of golden yellow; a regular "Butter Bean." Lb., 45c; 2 lbs., 80c.

Dwarf, Shell

WHITE MARROWFAT. Very prolific; pods are broad and green; Beans are large, pure white, and of excellent cooking quality. Lb., 35c; 2 lbs., 60c.

Bush Lima

Sow in drills 2 feet apart, in light, rich soil, dropping seeds about 1 foot apart in the row and covering 2 inches.

BURPEE'S BUSH LIMA. An immense yielder and of very sturdy growth; it is the bush form of the Large White Lima. Lb., 50c; 2 lbs., 90c.

FORDHOOK BUSH LIMA. This is, without doubt, the best Bush Lima Bean in cultivation; it is of strong, upright growth, keeping the pods from touching the soil; the pods often measure 4 to 5 inches, and contain four fine, large beans. Lb., 55c; 2 lbs., \$1.00.

HENDERSON'S BUSH LIMA. The earliest variety; Beans are very flat and small but tender; very prolific and of excellent flavor. Lb., 50c; 2 lbs., 90c.

Pole String Beans

1 qt. will sow 100 hills.

Pole Beans, especially Limas, require to be sown when the soil is perfectly warm; they like a rich, loamy soil. Sow in hills, about 4 feet apart each way, and before sowing place poles about 6 to 8 feet long, firmly in the hills, then sow five or six Beans to a hill.

KENTUCKY WONDER GREEN-POD. In our opinion the most prolific green Pole Bean.

Lb., 45c; 2 lbs., 80c.



Copenhagen Market.

Beet

1 oz. will sow 50 feet of a drill.

Sow as early in spring as the ground can be worked, in drills 1 foot apart and 1 inch deep; when large enough, thin to about 4 inches apart; for succession sow at intervals of about two weeks or so until July.

CRIMSON GLOBE. A second early, round sort, one of the best Beets in cultivation. It does not grow large or coarse and has a short top; flesh and skin are of a brilliant, dark red. We can strongly recommend this variety. Pkt., 10c; oz., 25c; $\frac{1}{4}$ lb., 75c; lb., \$2.50.

DETROIT DARK RED. A choice variety of Turnip Beet. It has a small top, growing upright; dark red skin, with deep crimson flesh; tender, delicious. Pkt., 5c; oz., 25c; $\frac{1}{4}$ lb., 75c.

SWISS CHARD. This variety is grown purely for the tops, as it does not form a tuber similar to the other varieties. It is used like Spinach, and a row of it in your garden will keep you supplied with "greens" all summer, as it stands cutting to the ground a great many times. When sown once always sown. Pkt., 10c; oz., 25c; $\frac{1}{4}$ lb., 70c.

Brussels Sprouts

1 oz. will sow 200 feet of drill.

Sow outside in May in drills, and transplant later to about $1\frac{1}{2}$ to 2 feet apart. Cultivation similar to Cabbage.

IMPROVED DWARF. A variety of compact growth; very prolific, and one which we can thoroughly recommend. Pkt., 10c; oz., 35c.

Carrot

1 oz. will sow 100 feet.

For Carrots the soil should be deeply dug and richly manured. Sow the early varieties as soon as the ground can be worked. Sow in rows, about 15 inches apart, and thin out plants to about 4 inches. Later sowing can be made up to the second week in June. Press seed firmly after sowing.

EARLY SCARLET HORN. Can be grown either in frames or in the open ground. Grows only about 3 inches long, but is early and of excellent flavor. Pkt., 5c; oz., 25c; $\frac{1}{4}$ lb., 70c.

DANVERS HALF LONG. An excellent kind for all soils. It is very productive and of good quality; it grows 6 to 7 inches long, and is a favorite sort. Pkt., 5c; oz., 25c; $\frac{1}{4}$ lb., 70c.

LARGE WHITE BELGIAN. This is used principally for stock-feeding. It produces a long, thick, white root of about 8 inches. Pkt., 5c; oz., 20c; $\frac{1}{4}$ lb., 45c.

Cauliflower

1 oz. will produce 3,000 plants.

For early Cauliflower sow the seed in a hotbed in February, and transplant into frames or flats 2 inches apart. Plant out in the open when the ground is warm, 2 feet apart each way. For late Cauliflower, sow the seed in the open ground in May and treat like late Cabbage.

SNOWBALL. This is the earliest and best variety in cultivation; sure-heading; dwarf. Can be forced or used as a late variety as well. Pkt., 20c; $\frac{1}{4}$ oz., \$1.00.

Cabbage

1 oz. will produce 3,000 plants.

Sow the seed of early Cabbage in a hotbed in January and February; transplant into flats or frames about 2 inches to $2\frac{1}{2}$ inches apart. As soon as the ground can be worked in spring, plant in the open ground in rows from 18 to 24 inches apart, with the rows 2 feet apart. For late Cabbage, sow in the open ground during April and May, and transplant later, allowing more room than the early varieties as they are larger.

EARLY JERSEY WAKEFIELD, SELECTED. The best early, pointed-head Cabbage in cultivation; of excellent quality and extra early. Pkt., 10c; oz., 50c; $\frac{1}{4}$ lb., \$1.75.

COPENHAGEN MARKET. The earliest round sort in the market. The heads often reach 8 to 10 lbs. in weight, and are hard and solid. A very fine variety. Pkt., 10c; oz., 50c.

EARLY SUMMER. A splendid second-early sort; heads are round and flat and perfectly solid; a good keeper. Pkt., 5c; oz., 40c; $\frac{1}{4}$ lb., \$1.25.

DANISH BALLHEAD. An extra solid heading variety and splendid for storing away for winter. Pkt., 10c; oz., 50c; $\frac{1}{4}$ lb., \$1.50.

GREEN CURLED SAVOY. This is a variety of Cabbage which should be grown more extensively. It withstands the Cabbage worm better than the other varieties, and has a distinct flavor, being much sweeter than the others. It improves by being slightly touched by frost. Pkt., 5c; oz., 40c.

SELECTED LATE FLAT DUTCH. This is an exceedingly large variety of late Cabbage, of excellent quality and texture; a splendid keeper. Pkt., 10c; oz., 45c; $\frac{1}{4}$ lb., \$1.50.

MAMMOTH RED ROCK. This is the best red Cabbage in cultivation. Fine, large, solid, round heads. Pkt., 5c; oz., 40c.

Celery

1 oz. produces about 3,000 plants.

Sow seed under glass in March, or in the open ground in April. When showing the second leaf well, transplant in a bed 3 inches apart and leave until July, keeping the bed free from weeds. In July, plant in shallow trenches which have been well manured; make two rows in the trench, placing the plants 1 foot between the rows and the trenches about 3 to 4 feet apart; place the plants about 6 inches from each other. Then as the plants grow, commence earthing them up with a hoe and also by pressing the soil around them with the hand to keep the leaves from spreading, you can place the earth within a few inches of the tips of the leaves. To store celery for winter use, lift the plants, roots and all, and place in damp soil, upright and close together, in a dark cellar.

PERFECTED WHITE PLUME. This is the best variety for fall use right up to Christmas; it is almost pure white and is easily blanched; it is crisp, brittle and of excellent flavor. Pkt., 10c; oz., 50c; $\frac{1}{4}$ lb., \$1.50.

GOLDEN SELF-BLANCHING. This Celery is of a beautiful golden-yellow color and of excellent flavor; it is acknowledged to be one of the most profitable varieties grown; it produces good, heavy growth, and fine, brittle, crisp stalks and large, solid hearts. Pkt., 10c; oz., 85c.

WINTER QUEEN. One of the best winter Celeries, producing a very thick, heavy stalk and large heart; when blanched the color is a creamy white. Pkt., 10c; oz., 30c.

Celeriac

This is a variety of Celery which is grown for the bulbous root more than the stalk. Sow seed in the open ground in April and treat the same as Celery. The leaves are used for flavoring soups, etc., while the roots are boiled, and when cool, are sliced and served as a salad.

LARGE SMOOTH PRAGUE. Very large and of excellent quality. Pkt., 10c; oz., 40c.

Chicory

1 oz. will sow 100 feet of drill.

Sow in June, in drills, 10 inches apart, and keep growing till November, when it should be lifted and cut $1\frac{1}{2}$ inches from the neck, then planted $1\frac{1}{2}$ inches apart in trenches 16 inches deep, with good soil, and covered with manure. It can be eaten raw or cooked.

WITLOOF, or FRENCH ENDIVE, Pkt., 10c; oz., 35c.

Corn

1 qt. will sow 200 hills.

We need not say much about the cultivation of Corn, but a few special points in order to get best results are worth mentioning. Sow in hills or rows, the hills being 3 to 4 feet each way, and if in rows about 4½ feet apart. Seed is placed from 6 to 8 inches apart in the rows, or about 4 to a hill.

ALL CORNS ARE 10c PER PKT. EXCEPT WHERE SPECIALLY PRICED.

GOLDEN BANTAM. An early variety and the most delicious Corn in cultivation. It is the only variety that the writer grows in his garden, planting it at intervals of ten days, commencing May 15th, and making the last planting on July 15th. This season we had a continuous supply of delicious Corn from July until October 20. The ears are small, and if you prefer size to flavor, you will plant the larger varieties. The growers for market, of course, always plant the large, showy varieties; there is no question of flavor, as no Corn has any after it has been picked several hours. Lb., 50c; 2 lbs., 90c.

EARLY EVERGREEN. Similar in style to Stowell's Evergreen, but is 10 to 12 days earlier; the ears grow 8 inches long, with usually 14 rows; very sweet and tender; the kernels break off free from the cob and are minus the husky tips found on other varieties. Lb., 40c; 2 lbs., 70c.

COUNTRY GENTLEMAN. No Corn can compare with this for sweetness; the cob is not usually large, but the kernels are deep. It is a very productive variety and most popular. Lb., 45c; 2 lbs., 80c.

STOWELL'S EVERGREEN. This is the latest of Corns; the stalks attain a height of 7 feet; it produces very large ears in great abundance; very tender and sugary; considered the best late. Lb., 40c; 2 lbs., 70c.

WHITE RICE POP CORN. Everybody should grow a little of this for popping during the winter. This is about the best variety. Lb., 25c, free by mail.

Corn Salad

3 oz. to 100 feet of drill.

Sow in early spring, also during August, broadcast or in drills, 6 inches apart, and cover the seed about one-fourth inch; before winter sets in, cover with straw or leaves; in early spring remove the covering and you will get good greens when very little else in that line can be had.

LARGE-SEEDED. One of the best varieties. Pkt., 5c; oz., 15c; ¼ lb., 40c.

Collards

1 oz. will produce 3,000 plants.

Sow seed in July and August, treat same as Cabbage; transplant when about a month old, in rows about 1 foot apart.

GEORGIA. Used as a substitute for Cabbage. Pkt., 5c; oz., 20c; ¼ lb., 60c.

Cress

The curled variety may be sown in shallow drills, 1 foot apart; it grows quickly and should be cut when young; sow often, as when left to get old it becomes very pungent; it makes a tasty salad. The Water Cress, on the other hand, requires moisture; plant it along a stream or in very wet ground near a pond.

EXTRA-CURLED GARDEN. Pkt., 5c; oz., 15c; ¼ lb., 35c.

WATER CRESS. Easily cultivated, and when once sown remains for years, as it seeds itself. Pkt., 10c; oz., 40c.

Cucumber

1 oz. will sow 50 hills.

Sow when the ground is thoroughly warm, in hills about 4 feet apart each way; sow about six to eight seeds to a hill; thin out, when advanced to the second leaf, to about four plants. For pickles, sow from June to the middle of July; for extra-early Cucumbers sow in a hotbed early in April, in small pots, and transplant out when the ground is warm.

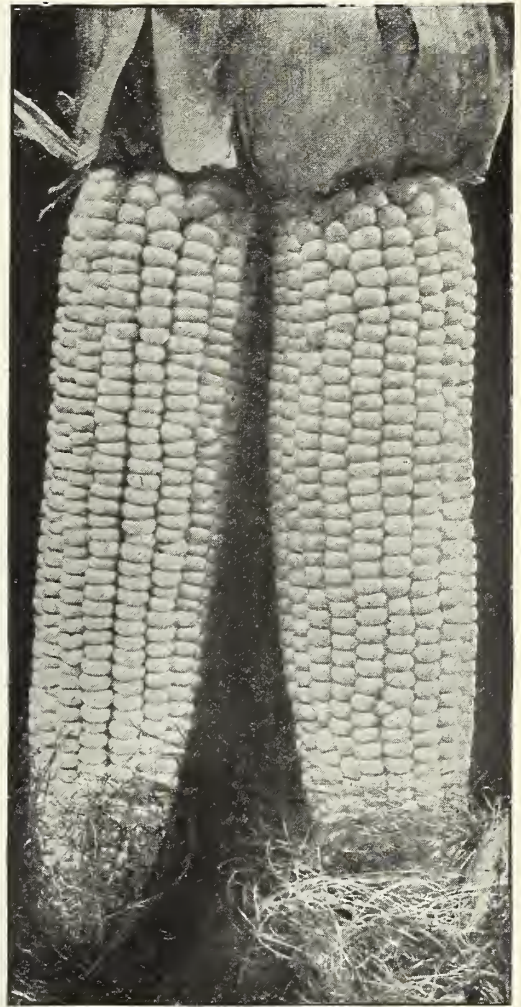
EARLY WHITE SPINE (Improved). An excellent, early, table Cucumber; perfect form and size; very few seeds; a valuable slicing variety. Pkt., 5c; oz., 15c; ¼ lb., 40c.

DAVIS PERFECT. This is a standard variety of good size; rich, dark green color which it retains until nearly ripe; very tender and of fine flavor. Pkt., 5c; oz., 15c; ¼ lb., 40c.

IMPROVED LONG GREEN. An excellently flavored Cucumber; very strong grower, prolific bearing; fruit 12 inches long; when young, used for pickles; very tender and crisp. Pkt., 5c; oz., 15c; ¼ lb., 40c.

CHICAGO PICKLING. Universally known as one of the best varieties for pickling; the fruits are uniform in size and dark green; a very prolific bearer. Pkt., 5c; oz., 15c; ¼ lb., 40c.

ENGLISH FORCING TELEGRAPH. This variety is for forcing under glass, or can be grown in a frame; the fruit often attains a length of 18 to 20 inches; for slicing no other variety can be compared. Pkt., 25c.



Early Evergreen Corn.

Dandelion

1 oz. will sow 100 feet of drill.

Sow about May in drills 1 foot apart; thin out the seedlings to 12 inches apart; leave till fall, when they can be covered with leaves or salt hay until the following early spring. The earlier it is used the tenderer it is. It can be blanched by placing two boards over the rows thus \wedge , which improves it greatly.

THICK-LEAVED. Pkt., 10c; oz., 75c.

Endive

1 oz. for 200 feet of drill.

This can be sown from the middle of June to middle of August; cover seed lightly; when about 2 inches high, thin out to about 1 foot apart. When nearly developed, tie outer leaves at the tops together, but wait for a dry day. When the plants are dry, this blanches the inner leaves in about two weeks. If required for winter use, lift the plants with a ball of earth to each and place close together in a frame or dry cellar, which gets plenty of air.

WHITE CURLED. A good early variety; grows to a large size; very crisp and tender. Pkt., 5c; oz., 25c; ¼ lb., 70c.

BROAD-LEAVED BATAVIAN. Broad, thick leaves; much larger in size than the other variety; can be used like Spinach, or blanched by tying up. Pkt., 5c; oz., 25c; ¼ lb., 70c.

Eggplant

1 oz. will produce 1,500 to 2,000 plants.

Sow seed in hotbed early in March, and transplant into small pots; when the weather is warm, plant out 2 feet apart each way.

NEW YORK SPINELESS, IMPROVED. The largest, most prolific and best flavored of all. Pkt., 10c; oz., 60c.

Kale or Borecole

1 oz. is sufficient for 150 feet of drill.

Sow seed in May for early use, in drills, and transplant in rows 24 inches apart each way. Can be sown also in September for very early spring use; protect during winter. It is a very nutritious green vegetable.

DWARF GREEN CURLED SCOTCH. One of the hardiest; very dwarf and of spreading habit; densely curled. Pkt., 5c; oz., 20c; ¼ lb., 60c.

Kohl Rabi

1 oz. is sufficient for 200 feet of drill.

Sow seed in early spring in a hotbed, or as early as possible out-of-doors, and transplant when strong enough in drills 4 to 6 inches apart and 16 to 18 inches between drills. If sown in drills the plants can be thinned out. If left to get larger than 2½ inches in diameter, it becomes tough and woody. It is cooked similar to turnips, but is different in growth from the turnip as it forms the bulb on top of the ground.

EARLY WHITE VIENNA. Very fine-grained root of excellent quality; early; the bulb forms quickly. Pkt., 10c; oz., 30c; ¼ lb., 85c.

Leek

1 oz. will sow 100 feet of drill.

Sow seed as early as possible in spring outdoors, in drills; when about 6 inches high transplant into rows 12 inches apart, and as deeply as possible, in good, rich soil. By planting deeply it enables one to earth up against the stalks so as to blanch them. The flavor is very much like that of a mild onion.

LONDON FLAG. The most popular variety for family use; mild and tender. Pkt., 5c; oz., 30c; ¼ lb., 80c.



Big Boston Lettuce.

Lettuce

1 oz. will produce about 3,000 plants.

Sow seed in rows thinly, having the rows about 1 foot apart; thin out, leaving the plants you wish to mature about 1 foot apart. Seed can also be sown in a hotbed early and transplanted out when the ground is warm. Lettuce likes well pulverized, rich soil; in extremely dry weather it seldom heads well.

BLACK-SEEDED SIMPSON. A loose-leaved, very popular, curly-leaved sort; withstands heat and drought well. Pkt., 5c; oz., 20c; ¼ lb., 60c.

GRAND RAPIDS. (Forcing). Of highest merit as a forcing variety; it is loose-leaved and beautifully frilled. Of upright growth, it can also be grown out-of-doors with great success. Pkt., 5c; oz., 20c; ¼ lb., 60c.

EARLY CURLED SIMPSON. This is a standard loose-leaved variety, the leaves being light green, curled and of excellent quality; a very satisfactory sort for the home garden. Pkt., 5c; oz., 20c; ¼ lb., 60c.

BIG BOSTON. A large, flat-heading variety, of exceptional merit. It is good as an early frame, summer or late fall kind; a sure header, except in very hot weather; it is more extensively grown than any other. Pkt., 5c; oz., 20c; ¼ lb., 60c.

HANSON IMPROVED. This Lettuce is a universal favorite. It produces very large, solid heads and hearts quickly, and stands the summer well. The outer leaves are light green and a handsomely frilled at the edges, while the inner are nicely blanched. Pkt., 5c; oz., 20c; ¼ lb., 60c.

PARIS WHITE COS. A splendid summer variety; erect growing. Pkt., 5c; oz., 20c; ¼ lb., 60c.

Muskmelon or Cantaloupe

1 oz. will sow about 75 hills.

Muskmelons should be sown when the ground is permanently warm, in hills where well-rotted manure has been dug in previously. Make hills about 6 feet apart each way, and sow from eight to ten seeds in each hill, thinning out afterward, when the second tier of leaves has formed, to four plants; watch for the melon louse or other insects which will attack your plants; spray with arsenate of lead.

ROCKY FORD, IMPROVED. This is, without doubt, the finest green-fleshed melon in cultivation; thin skin and very thick meat; the skin is yellow, evenly ribbed and heavily netted. Pkt., 5c; oz., 15c; ¼ lb., 40c.

OSAGE. Most in demand of the red-fleshed varieties; medium size, oval; the flesh is thick and of delicious flavor. Pkt., 5c; oz., 15c; ¼ lb., 50c.

EMERALD GEM. An extra-early, salmon-fleshed variety of excellent quality. The fruit is rather small, with smooth, thin skin; delicious flavor. Pkt., 5c; oz., 15c; ¼ lb., 50c.

JENNY LIND. A small, flat, but very early sort; skin heavily netted, with green flesh; a very nice little melon. Pkt., 5c; oz., 15c; ¼ lb., 40c.

BLenheim ORANGE. (Imported). Scarlet flesh. Pkt., 25c.

WINDSOR CASTLE. (Imported). Green flesh. Pkt., 25c.

Watermelon

1 oz. will sow about 40 hills.

Sow in hills about ten feet apart, and treat the same as Muskmelons.

SWEETHEART. Round, very large, green and mottled; very meaty and sweet, bright red flesh; thin rind; very productive. Pkt., 5c; oz., 15c.

KLECKLEY SWEETS, or MONTE CRISTO. This is a Watermelon of recent introduction, and is a good one; it is a vigorous grower and very productive; very thin rind of dark green; the flesh bright scarlet; very sweet. Pkt., 5c; oz., 15c.

TOM WATSON. A large, oblong variety, with green rind; rather tough; very productive; flesh is bright red, very sweet and tender. Pkt., 10c; oz., 20c.

Mustard

1 oz. to 75 feet of drill.

Sow thickly in shallow drills a foot apart, and cut when a few inches high; used as a salad.

SOUTHERN CURLED. One of the best. Pkt., 5c; oz., 10c; ¼ lb., 25c.

Onions

1 oz. will sow 160 feet of drill.

Sow as early in the spring as possible, in drills 1 to 1½ feet apart; seed should be firmed well in the soil; thin out to about 3 inches apart. Sets are planted in drills about the same distance as seed when thinned. The finest Onions are produced by sowing the seed in a hotbed in February and transplanting later to the open ground.

AILSA CRAIG. This is one of the largest Onions grown by sowing seed in a hotbed and transplanting. It is globe-shaped, with straw-colored skin; of mild flavor and a good keeper. Pkt., 10c; oz., 50c.

DANVERS YELLOW GLOBE. A splendid Onion for keeping and a universal favorite on account of this quality; straw-color and a certain cropper. Pkt., 10c; oz., 50c.

RED WETHERSFIELD. A large, flat, purplish, red-skinned variety, of rather strong flavor; but a very popular Onion as a keeper. Pkt., 10c; oz., 40c; ¼ lb., \$1.10.

SOUTHPORT WHITE GLOBE. A fine, globe-shaped Onion of excellent quality; great cropper and of very mild flavor. A grand keeper; a most popular Onion for private use. Pkt., 10c; oz., 65c.

PRIZETAKER. Of good large size and handsome appearance; it is globe-shaped, with pale yellow skin; flesh white, fine-grained and mild, delicate flavor. A grand Onion to start in hotbed for transplanting later. Pkt., 10c; oz., 60c.

WHITE PORTUGAL, or SILVER SKIN. A very mild-flavored variety, it is used extensively for pickling on account of its good shape when small. Pkt., 10c; oz., 60c.

Onion Sets

1 qt. will plant about a 50 foot row.

These should be planted as early as possible in the spring, in rows 12 inches apart and about 2 inches between each set, and several plantings can be made during the spring for succession, if desired for pulling when green.

Purchaser paying delivery charges

	Per qt.	4 qts.
White, Selected Sets	\$0.40	\$1.45
Yellow, Selected Sets35	1.20

Prices are constantly changing. If larger quantities are required we shall be glad to send special quotation.

Okra

One ounce will sow about 30 feet of drill.

Sow in drills when the ground is warm, about 3 feet apart; cover seed about one inch; when about 6 inches high, thin out to about 10 inches apart. It is of easy culture and grows freely. The green pods are used extensively for flavoring soups and stews.

IMPROVED LONG GREEN. A very productive variety, and a great favorite, bearing long pods of excellent quality. Pkt., 5c; oz., 10c; ¼ lb., 25c.

Parsley

One ounce will sow 100 feet of drill.

Parsley is very slow to germinate, often taking three to five weeks before it shows its appearance, so early sowing is recommended. Sow in lines about 1 foot apart, and cover seed about ½ inch; thin out to about 4 inches. It likes good, rich, deep soil.

DOUBLE CURLED. The most popular variety; very curly foliage which keeps its color all season. Pkt., 5c; oz., 15c; ¼ lb., 50c.

FERN-LEAVED. Used for garnishing, the leaves being fern-like fronds. Pkt., 5c; oz., 20c; ¼ lb., 50c.

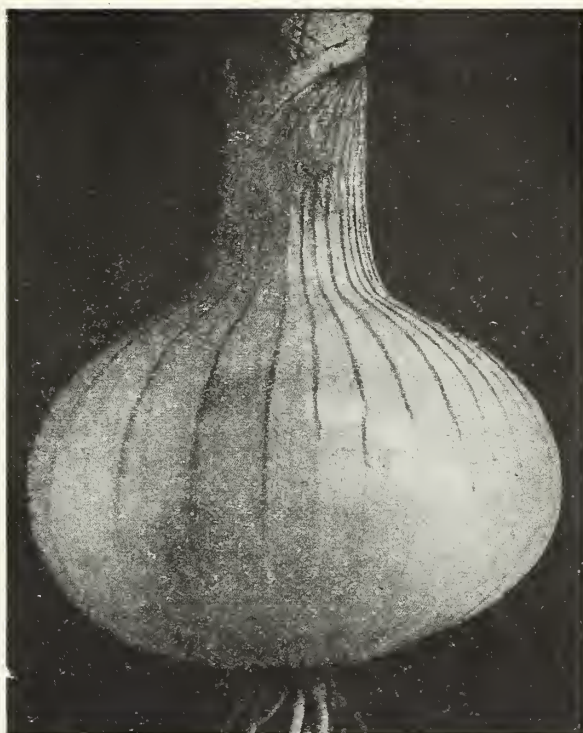
Pumpkins

One ounce will sow 50 hills.

Sow when the ground becomes permanently warm, in hills 8 to 10 feet apart, about six seeds to a hill, and when seedlings come up watch for the striped beetle which attacks them; sprinkle with air-slaked lime mixed with ashes. Keep these away from your other vine crops.

LARGE CHEESE. Large, flat, round, with creamy yellow skin; flesh orange, thick and tender; fine for pies. Pkt., 5c; oz., 15c; ¼ lb., 40c.

WINTER LUXURY. A grand pie Pumpkin; small but productive, and an excellent keeper; flesh deep golden, tender and very sweet. Pkt., 5c; oz., 20c; ¼ lb., 50c.



Prizetaker Onion.

Peas

One qt. will sow 100 feet of drill.

The first thing to sow in the garden in spring, as soon as the ground can be worked, is a line of early Peas, which should be of a smooth variety. Sow in rows, either double or single, 4 feet apart, the tall, late varieties are better in double rows a foot apart, with brush placed between them for support. Successive sowings of Peas can be made up to the first of June, and is continued until the first of August, when a row of an extra early variety may be sown for fall picking.

ALL PEAS ARE 10 CENTS PER PACKET, EXCEPT WHERE SPECIALLY PRICED.

FIRST OF ALL. An extra-early Pea of excellent quality. Smooth-seeded; 2½ feet high; an excellent cropper; very tender and of good flavor. Pkt., 10c; lb., 35c; 2 lbs., 60c.

ALASKA. An extra-early, round Pea, not so high as First of All, only reaching about 1½ to 2 feet; quite productive and a popular variety. Pkt., 10c; lb., 35c; 2 lbs., 60c.

WITHAM WONDER. An excellent, dwarf, wrinkled Pea, of uniform growth, with larger pods than American Wonder, well filled with Peas of excellent flavor. Pkt., 10c; lb., 35c; 2 lbs., 60c.

GRADUS, or PROSPERITY. This is one of the best early, large-podded varieties in cultivation; it is universally known; it grows 3 feet high, the vines being strong and bearing even-sized, large pods in abundance, filled with large Peas of the very finest possible flavor. Don't be without this Pea in your garden—once grown, always grown. Pkt., 10c; lb., 40c; 2 lbs., 70c.

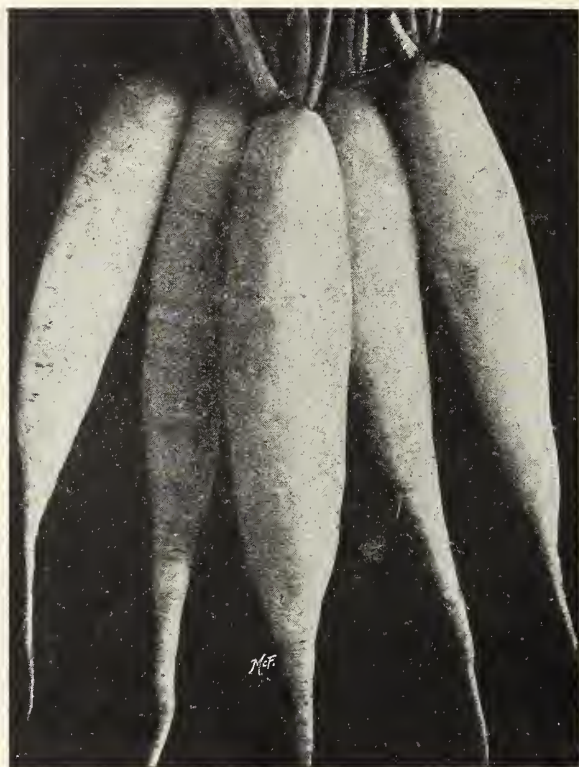
TELEPHONE. This is one of the best of the late varieties. Its height is 3½ feet; vines of strong growth, and carry an abundance of well-filled pods, with fine, large, dark green Peas of most delicious flavor. Pkt., 10c; lb., 40c; 2 lbs., 70c.

Parsnips

One ounce will sow about 150 feet of drill.

Sow in the open as soon as the ground is fit to be worked, in drills 18 inches apart; cover about ½ inch; when up fairly strong, thin out about 5 inches apart. Half can be pulled in the fall for use and the remainder left in the ground and dug as required all through the winter.

HOLLOW CROWN, IMPROVED. The best variety; fine, long, smooth roots, of excellent flavor. Pkt., 5c; oz., 25c.



Icicle Radishes.

Peppers

1 oz. will produce about 200 plants.

Sow in a hotbed or greenhouse, in flats, in March, and transplant into other flats or small pots when 3 or 4 inches high; then plant out in the open when the ground is warm and all danger of frost is past. Use rich soil, well prepared, making the rows 2 or 3 feet apart and setting the plants 15 to 18 inches from each other.

CHINESE GIANT. One of the largest Sweet Peppers in cultivation; very productive; green in color, changing to bright scarlet when ripe; of very mild flavor; unexcelled for making salad. Pkt., 10c; oz., 80c.

RUBY KING. A very mild variety; color bright ruby-red. A good variety for mangoes or pickling; very popular. Pkt., 10c; oz., 75c.

LARGE BELL, or BULL NOSE. A large, early variety; flesh is thick, hard, and less pungent than the other varieties. A favorite for stuffing when green. Pkt., 5c; oz., 60c.

RED CHILI. A small, bright red Pepper, very hot and pungent; very prolific. Used for making Chili sauce. Pkt., 5c; oz., 60c.

Rutabaga or Swedish Turnip

1 oz. to 150 feet of drill.

Sow during June and July, in drills; cultivate the same as turnips; take up the roots just before frost and store in a cellar or pit in the field; they make a splendid winter vegetable.

IMPROVED AMERICAN PURPLE-TOP. This is the best yellow-fleshed variety grown; of good, even size and fine quality; a splendid keeper. Pkt., 10c; oz., 25c; ¼ lb., 75c.

Salsify or Oyster Plant

1 oz. to 50 feet of drill.

Sow early in spring, in drills about 12 inches apart, 1 inch deep, and thin out, leaving the plants 6 inches apart; cultivate similar to parsnips or carrots. Dig in October a supply for use and leave the remainder in the ground. It can be cooked in any form; when sliced and fried it has an oyster-like taste, hence the name, "Oyster Plant;" is very wholesome and becoming more popular all the time.

MAMMOTH SANDWICH ISLAND. Superior to all other varieties, growing to a good size; mild in flavor and very popular. Pkt., 5c; oz., 30c.

Radish

1 oz. will sow 100 feet of drill.

Sow as soon as the ground is fit in spring, in rows 8 to 12 inches apart, and sow frequently, say every ten to fourteen days up to the first of June or so for succession. Radishes should be pulled when young and not sown too thickly. Winter varieties should be sown about the first of June, and cultivated similar to turnips.

EARLY SCARLET GLOBE. A fine forcing variety, of brilliant red color and almost round shape; tender and crisp. Also excellent for outdoor culture. Pkt., 5c; oz., 20c; ¼ lb., 50c.

EARLY WHITE-TIPPED SCARLET TURNIP. This variety has an attractive appearance on the table; the roots are round, of medium size, bright scarlet color except for the white tip; crisp, mild and tender. Pkt., 5c; oz., 20c; ¼ lb., 60c.

FRENCH BREAKFAST. A great favorite; oblong in shape; mild and tender. Pkt., 5c; oz., 20c; ¼ lb., 50c.

ICICLE. A beautiful, long, white, transparent Radish, of excellent quality; very crisp and brittle. Pkt., 5c; oz., 20c; ¼ lb., 50c.

LONG SCARLET SHORT-TOP. If you desire a long Radish, this is the best; color bright scarlet; of perfect shape provided the ground is in good condition; smooth, brittle and crisp; most popular. Pkt., 5c; oz., 15c; ¼ lb., 45c.

WHITE CHINESE. This is a winter variety; an extra fine, long, white sort; it takes much longer to mature than the other varieties, and is an excellent keeper. Pkt., 5c; oz., 20c; ¼ lb., 50c.

HALF-LONG BLACK SPANISH. Of very mild flavor; a popular winter variety; good keeper. Pkt., 5c; oz., 15c; ¼ lb., 45c.

Squash

1 oz. will sow from 25 to 40 hills.

The weather must be good and warm in which to sow Squash seed. Sow in hills, similar to cucumbers and melons, only making the hills for summer varieties 4 feet apart each way, and for the winter varieties 10 to 12 feet. Seed freely, eight to ten seeds in each hill, and thin out, leaving four of the strongest plants. Examine the vines frequently for bugs.

EARLY WHITE BUSH. A most popular early summer variety, with white skin, and of very fine flavor; very prolific. Pkt., 5c; oz., 15c; ¼ lb., 45c.

BUSH SUMMER CROOKNECK. This is another good summer Squash, shaped like a club and very much warted; flesh yellow, thick, and of excellent flavor. Pkt., 5c; oz., 15c; ¼ lb., 40c.

DELICIOUS. This is a much finer Squash than Hubbard; it is oblong in shape, with green skin; best in early winter; weighs from five to ten pounds; a delicious Squash. Pkt., 5c; oz., 15c; ¼ lb., 50c.

TRUE WARTED HUBBARD. This is an excellent winter Squash, and although we state that the Delicious is better, it is a matter of taste. It is an excellent keeper, and the flesh is very rich, fine-grained and dry. Pkt., 5c; oz., 15c; ¼ lb., 45c.

ENGLISH VEGETABLE MARROW. A favorite English variety; skin is cream-colored; flesh white, of excellent quality and flavor; early. Pkt., 10c; oz., 30c; ¼ lb., 85c.

Spinach

1 oz. to 100 feet of drill.

Sow thinly, in rows, 1 foot apart, 1 inch deep, as early as the ground is fit. For fall and early spring use, sow in September and cover with straw. The New Zealand variety should be sown in hills two feet each way, three or four seeds to a hill.

LONG SEASON. Very thick, rich, dark green leaves; stands longer than any other variety before going to seed. Several successive sowings of this variety can be made during the summer. Pkt., 5c; oz., 20c; ¼ lb., 65c; lb., \$2.25.

BLOOMSDALE, or SAVOY-LEAVED. Of upright growth; large, tender, crumpled leaves; a good early variety. Is also excellent for autumn sowing for early spring use. Pkt., 5c; oz., 20c; ¼ lb., 65c; lb., \$2.25.

NEW ZEALAND. Sow early and it will provide you with plenty of greens all summer; stands heat and drought well; very prolific. Pkt., 10c; oz., 30c; ¼ lb., 80c.

Tomato

1 oz. is sufficient for 3,000 plants.

Sow seed in a hotbed, greenhouse, or window, about the first of March; when the seedlings have made the second leaf well, transplant into flats or small pots; do not crowd them, as it makes them very weak and spindly. Plant out in the open about the middle of May, or when all danger of frost is past, in rows 4 feet each way; later varieties require more space than this. Tie to stakes or trellis.

ELLIOTT'S EARLY BEAUTY. This Tomato has been thoroughly tested and comes out "number one" for earliness. We class it among the pink sorts, being of a rosy-pink color; the skin is thin and fruits are perfectly formed and of a fair size; of excellent quality, and ripens evenly on the vines. Pkt., 10c; oz., 45c.

SUNRISE. Rich scarlet; medium size; perfectly round, solid fruit. The plant is strong in growth and a most prolific bearer. A splendid greenhouse variety. Pkt., 10c; oz., 45c.

EARLIANA. An extremely early variety; smooth, bright red fruits; very prolific; grows in clusters; medium size. An excellent, early, outdoor variety. Pkt., 10c; oz., 45c.

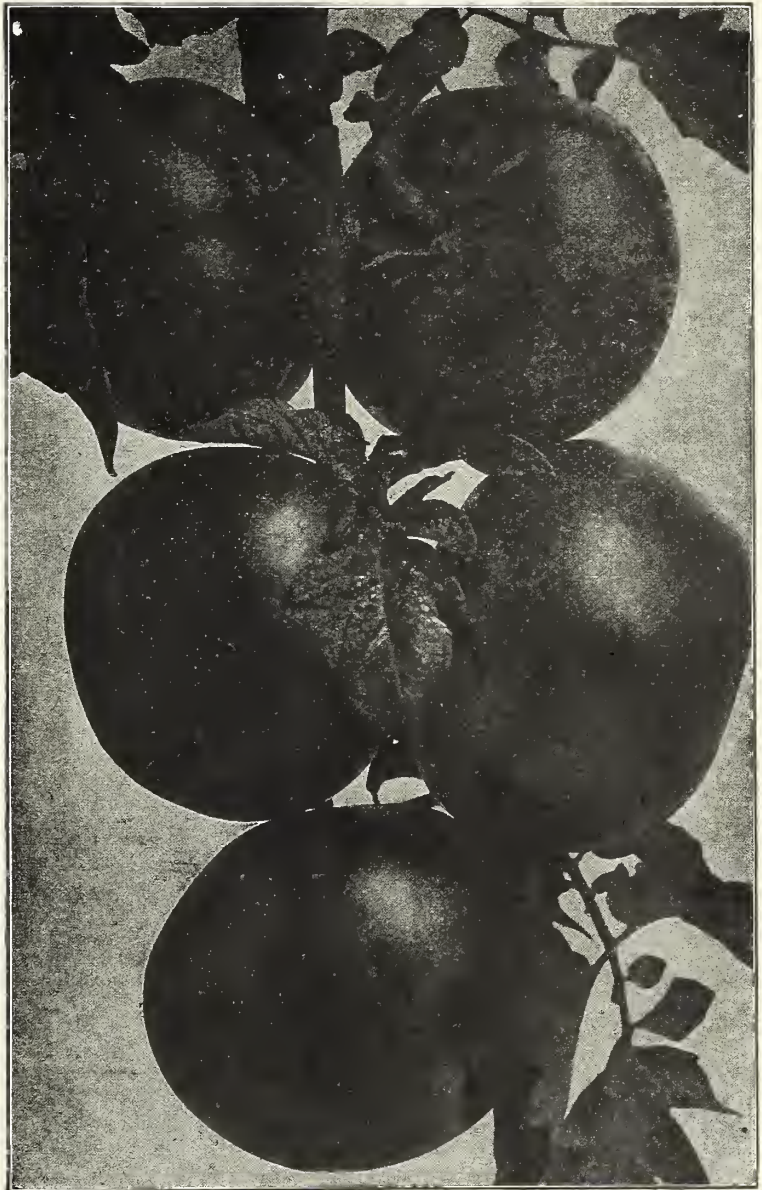
DWARF CHAMPION. Quite a distinct Tomato as regards growth, being of a very thick, stocky habit, with very broad foliage, and hardly requires staking; early and prolific; fruit very handsome and purplish red, and borne in clusters as shown in the illustration. Pkt., 5c; oz., 40c.

STONE. One of the very best varieties to grow for main crop. The fruit is round, of uniform size, solid, and of a rich, fine color; very prolific. Pkt., 5c; oz., 40c.

PONDEROSA. Undoubtedly the largest Tomato in cultivation; the fruit, although large, is of good quality, the flesh being very thick and meaty; the color is purplish pink. The plant is exceptionally strong in growth, and holds up its immense weight of fruits well from the ground, but is all the better for being tied up or grown on a trellis. Pkt., 10c; oz., 60c.

GOLDEN QUEEN. One of the handsomest yellow Tomatoes in cultivation; of medium size and excellent, mild flavor. Pkt., 10c; oz., 45c.

YELLOW PLUM. A small, lemon-yellow, ornamental variety. Solid flesh of fine quality. Used for preserving. Pkt., 10c; oz., 45c.



Dwarf Champion Tomato.

Turnips

1 oz. to 150 feet of drill.

Sow in drills about 1 foot apart, in early spring; thin out to 3 or 4 inches. Turnips can be sown every two or three weeks for successional crops to the end of May.

EARLY WHITE MILAN. An extra-early variety, of very rapid growth; pure white; rather flat; quality excellent. Pkt., 10c; oz., 25c; ¼ lb., 75c.

EARLY SNOWBALL. An early, pure white, globe-shaped variety; very productive; flesh very fine-grained; delicate flavor. Very popular for early spring sowing and also for sowing in August, as it is quick maturing. Pkt., 5c; oz., 20c; ¼ lb., 60c.

PURPLE-TOP WHITE GLOBE. A fine, large, globe-shaped variety, the skin being purple at the top and the lower part white; of uniform size and excellent quality. Pkt., 5c; oz., 20c; ¼ lb., 60c.

SEE ALSO RUTABAGA.

Herbs

	Pkt.	Oz.		Pkt.	Oz.
ANISE. Used for flavoring.....	\$0.05	\$0.15	FENNEL, SWEET. Used in sauces and for gar-		
BORAGE. Grown for bees, and used as a salad...	.05	.15	nishing.....	\$0.05	\$0.15
CARAWAY. Used in confectionery.....	.05	.15	ROSEMARY. For seasoning.....	.05	.35
CATNIP. Cats are fond of it.....	.10	.40	SAGE. The leaves are used in dressings.....	.05	.25
CORIANDER. For garnishing and flavoring.....	.05	.15	SUMMER SAVORY. Used as a seasoning.....	.05	.35
DILL. Used in pickles, sauces and soups.....	.05	.20	THYME. Used as a seasoning.....	.10	.60
LAVENDER. For perfume.....	.05	.25	WORMWOOD. Has medicinal qualities.....	.05	.40

ELLIOTT'S FLOWER SEEDS

Achillea Ptarmica "The Pearl"

A fine, tall, erect-growing plant, which is perennial and should be in every garden. Its height is 2 feet, and it produces bunches of double, white flowers on strong stems; a good plant for cutting.....\$0 10

Aconitum Napellus (Monkshood)

A hardy perennial, growing about 3 feet, bearing long spikes of hood-shaped, blue flowers; good for partial shade..... 05

Acroclinium, Everlasting

This is a pretty "everlasting" annual, growing about 15 inches high, bearing daisy-like flowers; if cut in the bud state and dried, the flowers can be used in winter bouquets. Sow seed out-of-doors when all danger of frost is past.

Double Mixed.....\$0 05
Single Mixed..... 05

Ageratum

A very popular, summer bedding annual plant; stands hot weather well, and produces large clusters of small, feather-like flowers in great profusion; popular for edgings. Seed is usually started in hot-bed and transplanted out-of-doors in May.

Blue Perfection. Large trusses; deep blue; 9 inches.....\$0 10
Imperial Dwarf White. 8 inches..... 05
Imperial Dwarf Blue. Clear blue; 8 inches..... 05
Little Blue Star. Very dwarf, 4 to 5 inches; covered with bright blue flowers..... 25

Alyssum

A most popular annual for edging or rockwork; very fragrant. Sow in open ground when frost is past.

Little Gem. Dwarf, compact habit and profuse bloomer, lasting a long time in bloom. Extra good for edging beds of other flowersoz. 75 cts...\$0 05
Sweet Alyssum (Maritimum). The popular Sweet Alyssum; very fragrantoz. 40 cts... 05
Saxatile compactum. A perennial variety for beds or edging, and is fine for use in the rock-garden; flowers golden yellow 10

Anchusa Italica, Dropmore Variety

A hardy perennial of robust growth; 4 feet; becoming more popular every year; bears long heads of bright blue flowers..... 15



Alyssum, Little Gem

Amarantus

These are decorative foliage plants of great value; being annuals, they can be sown out-of-doors, or started early inside and transplanted out later.

Caudatus (Love-Lies-Bleeding). 3 feet. Drooping racemes of Pkt. scarlet flowers.....\$0 05
Tricolor (Joseph's Coat). 2½ feet. Foliage bronze-green, scarlet and gold..... 05
Cruentus (Prince's Feather). Flowers feathery; dark red..... 05

Antirrhinum (Snapdragon)

This is a most popular and fine perennial, which blooms the first season from seed sown in February under glass. A sowing can also be made in May out-of-doors. These plants will bloom about September, and if protected well in the winter will grow very luxuriantly and throw enormous spikes of bloom the following season. The Snapdragon of late years has been used very largely for forcing under glass, and makes a fine show during the winter months.

Giant Scarlet.....\$0 10
Giant White..... 10
Giant Yellow..... 10
Giant Pink..... 10
Giant Mixed¼oz. 25 cts... 10

LARGE-FLOWERING HALF DWARF

Cottage Maid. Pale coral-pink 15
Bonfire. A lovely orange-color 15
Queen of the North. Pure white..... 10
Golden Queen. Rich yellow 10
Scarlet King. Rich scarlet..... 15
Mixed¼oz. 25 cts... 10

Anthemis Kelwayi

A handsome perennial, 2 feet high, bearing daisy-like blossoms of golden yellow; excellent for cutting..... 10

Aquilegia (Columbine)

A most popular hardy perennial, easily grown and blooming early; good for cutting. Sow seed in the open ground in spring; the plants like moisture and partial shade. A sowing can also be made in August and September

Chrysantha. Long-spurred, large, golden yellow flowers. 3 ft..\$0 10
Cerulea. The beautiful Rocky Mountain blue. 3 feet..... 10
Long-spurred Hybrids. A magnificent strain, comprising all possible colors; of robust growth; large flowers with long spurs. 25
Double Mixed.....¼oz. 20 cts... 05

Arabis alpina (Rock Cress)

An early spring-flowering perennial, of dwarf habit, attaining a height of 6 inches, suitable for edging or rockeries; it produces an abundance of pure white blossoms; very pretty..... 15

Arctotis grandis

A very pretty annual, growing 2 to 3 feet high, bearing flowers on long stems, resembling daisies, being of a glistening white on the upper surface and pale lilac on the reverse side. Seed can be sown early indoors and transplanted out as soon as weather is warm; by doing this they will bloom in July. A sowing can also be made out-of-doors. The flowers last a long time when cut.. 10

Asperula odorata (Woodruff)

A small perennial, creeping plant; dark green foliage, with white flowers. Its odor when cut and dried is very pleasant... 05

Asters

These are among the most popular summer and autumn flowers grown; from July to September some of them are seen in nearly every garden. They are easily grown and prefer a heavy, loamy soil, deeply dug and well prepared with some bone meal and air-slaked lime mixed in. For early blooming, the seed should be started in the hotbed, house or cold-frame in April, transplanting the seedlings later, as soon as all danger of frost is past, to the place where they are to bloom. For late blooming they can be sown out-of-doors in a well-prepared bed and transplanted; they can also be sown where they are to remain by thinning out; but they do better by transplanting. They are usually planted about 1 foot apart each way for massing in a bed; if you want them in rows, make the rows 2 feet apart and set the plants 1 foot apart in the rows.



Bed of Asters

Queen of the Market

One of the most popular and really the best Aster for early blooming; branching habit; height 15 inches; usually in bloom two to three weeks earlier than any of the others. The flowers are large, very full

QUEEN OF THE MARKET ASTERS, continued

and beautifully formed, being between the stiff-petaled kinds and the fluffy, very much incurved and twisted sorts.

	Pkt.		Pkt.
White	\$0 10	Rose	\$0 10
Crimson	10	Light Blue	10
Flesh-color	10	Dark Blue	10
Mixed		Dark Blue	10
		Mixed	1/4 oz. 50c. 10

Dwarf Chrysanthemum-Flowered

A large-flowering variety growing only 10 to 12 inches high; suitable for borders and pot culture.

	Pkt.		Pkt.
White	\$0 10	Light Blue	\$0 10
Rose	10	Dark Blue	10
Scarlet	10	Mixed	1/4 oz. 50 cts. 10

Branching, Late

Without exception the finest variety of Aster grown. Flowers are very large, borne on long, stiff stems; excellent for cutting; very floriferous on account of the branching growth; height 2 1/2 feet.

	Pkt.		Pkt.
White	\$0 10	Crimson	\$0 10
Shell-Pink	10	Lavender	10
Rose	10	Dark Blue	10
Mixed		Mixed	1/4 oz. 50c. 10

King Asters

These are a distinct class in themselves. They are of a branching habit; the flowers are borne on stiff stems about 12 inches high; the flowers are quilled somewhat and are folded lengthwise; very double, the center being nicely incurved.

Violet, Lavender, Rose and White.....each, \$0 20

Daybreak (Shell-Pink), Purity (Snow-White)

These two varieties are very popular; the flowers are very double and ball-shaped. They bloom in the second-early class and are of upright growth; last a long time after cutting. Each, pkt. 15 cts.

Single-Flowered Asters

Recently these have been increasing in demand greatly, the large, single blooms, showing the centers, are excellent for decoration.

Chinese. Mauve, Crimson, Blue, Rose-Pink, White and Mixed. Each, pkt. 10 cts.

HARDY PERENNIAL ASTER (Michaelmas Daisy). Mixed. Pkt. 10 cts.



Branching Asters

Balloon Vine

A quick-growing, annual climber; likes light soils; flowers are white, and the seed-vessels similar to small balloons; pretty foliage.....\$0 05

Balsam, Camellia-Flowered (Lady Slipper)

We offer the improved strain of these old-fashioned favorites. The seed can be started indoors in April, or sown out-of-doors later; leave about 18 to 24 inches between each plant to grow good specimens.

- | | | |
|--------|---------|--------|
| White | Crimson | Salmon |
| Yellow | Scarlet | Mixed |
- Each, pkt. 10 cts.

Balsam Apple and Balsam Pear

See Momordica, page 21.



Campanula Medium (Canterbury Bells)

Begonias

The Semperflorens varieties are quicker growers than the Tuberous-rooted, but the flowers are not to be compared; these small-flowered varieties are excellent and are used extensively for edging borders and beds; they also bloom nicely in the winter in pots.

- | | | |
|--|------|--------|
| Semperflorens, Erfordia. Rosy carmine..... | Pkt. | \$0 15 |
| Semperflorens gracilis luminosa. Fiery scarlet; reddish brown foliage..... | 25 | |
| Semperflorens, Vernon. Deep scarlet, with bronze foliage... | 15 | |
| Semperflorens, Mixed. Splendid colors..... | 10 | |

Bellis (Daisy)

A choice little perennial which, if covered during the winter with leaves or straw, will stand the cold. Easily raised from seed. Sowings can be made from early spring till August. Used principally for edging beds, borders or in rockeries.

- | | | |
|-------------------|------|--------|
| Double Rose..... | Pkt. | \$0 10 |
| Double White..... | 10 | |
| Double Mixed..... | 10 | |

Brachycome (Swan River Daisy)

A dwarf-growing annual; very floriferous, producing daisy-like flowers in various colors. Sow out-of-doors when all danger of frost is past.

- | | | |
|------------|------|--------|
| Mixed..... | Pkt. | \$0 05 |
|------------|------|--------|

Bryonopsis laciniosa

A good annual climber of the gourd species; ivy-like, green foliage; bears green fruits which change to bright scarlet with white stripe. 10 feet.....\$0 05

Calendula (Pot Marigold)

An old-fashioned garden annual of easy culture, and a continuous bloomer. Good for mixed borders, it is also grown in pots for winter bloom and is of great value. Sow thickly out-of-doors when all danger of frost is past.

- | | | | | |
|--|-----|--------|------|--------|
| Prince of Orange. One of the best..... | Oz. | \$0 30 | Pkt. | \$0 05 |
| Double Sulphur. Light yellow..... | 30 | | 05 | |
| Double White..... | 30 | | 05 | |
| Mixed, all sorts..... | 25 | | 05 | |

Calliopsis

A very free-flowering annual, suitable for any position and soil, blooming all summer long provided you keep the old flowers pulled off. Sow where the plants are intended to stay, and thin out to about 8 inches apart.

- | | | |
|--|------|--------|
| Drummond (Golden Wave). Deep golden yellow, with small brown center. 1 foot..... | Pkt. | \$0 05 |
| Marmorata. A tall, golden yellow variety, marbled red..... | 05 | |
| Tiger Star. Rich bronze, tigered and spotted with yellow; very peculiar; twisted petals..... | 10 | |

Campanula (Canterbury Bells)

These are so popular that we need hardly say much about them. Being biennials, the seed requires to be sown any time from June to September for the following year's blooming. Protect the first winter with leaves or straw. No lover of flowers should be without some Canterbury Bells in his garden, they make such a fine show.

- | | | |
|--|------|--------|
| Calycanthem (Cup and Saucer), Rose..... | Pkt. | \$0 10 |
| Blue..... | 10 | |
| White..... | 10 | |
| Mixed..... | 10 | |
| Medium, Single. Rose..... | 05 | |
| Blue..... | 05 | |
| White..... | 05 | |
| Mixed..... | 05 | |
| Medium, Double, Calycanthem and Single varieties, Mixed..... | 10 | |

PERENNIAL VARIETIES

If sown early, some will bloom the first season; the tall varieties make fine cut-flower plants, while the dwarf sorts make excellent border plants. They like rich, sandy soil.

- | | | |
|---|------|--------|
| Carpatica, Blue (Harebell). Very free-flowering, remaining in bloom nearly all summer; good for edging. 6 inches..... | Pkt. | \$0 10 |
| Carpatica alba, White. Same habit as above, only white. 6 inches..... | 10 | |
| Persicifolia grandiflora, Blue. One of the best, growing 2 to 3 feet; large bells..... | 15 | |
| Persicifolia grandiflora alba. White..... | 15 | |
| Pyramidalis, Mixed (Chimney Bellflower). Pyramids of blue and white flowers, often reaching 6 feet high..... | 05 | |

Canary-Bird Vine (Tropæolum Canariense)

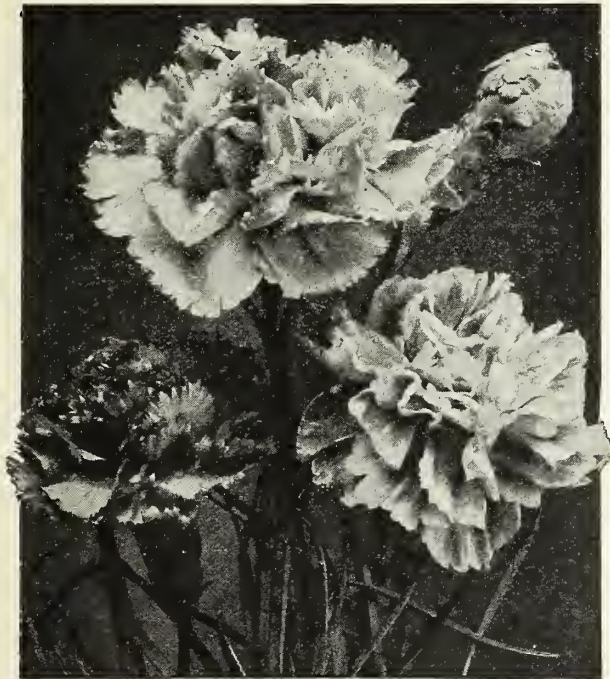
A very pretty annual climber, with canary-yellow blossoms; very popular.....oz. 30 cts... 05

Candytuft

A most popular annual, which is seen in nearly every garden; looks best massed in beds or in thick rows in borders; 1 foot high; grand for cutting. Sow in the open in April.

- | | | | | |
|--|-----|--------|------|--------|
| Empress, White. The finest white variety..... | Oz. | \$0 40 | Pkt. | \$0 05 |
| Crimson..... | 40 | | 05 | |
| Lilac..... | 40 | | 05 | |
| Mixed..... | 25 | | 05 | |
| Hardy Perennial Sempervirens. A white-blooming-variety, used in cemeteries, etc..... | | | | 15 |

CARDINAL CLIMBER. See Ipomœa, page 19.



Giant Marguerite Carnations

Carnations

These are sown under glass in the spring, or can be sown out later as soon as all danger of frost is past and the ground is warm. They are great favorites on account of their fragrance and qualities as cut-flowers.

- Giant Marguerite, Mixed. Extra-large flowers; very fragrant..... Pkt. \$0 15
- Chabaud's Early-blooming. A celebrated strain; blooms in six months from seed..... 25
- Hardy Border, Mixed. Very hardy, flowering the second season..... 10

CASTOR-OIL PLANT. See Ricinus, page 24.

Celosia

CRISTATA (Crested Cockscomb)

This is an annual of easy culture. Sow seeds indoors, and transplant later; or they may be sown out-of-doors. Suitable for borders or pots.

- Glasgow Prize. Large combs; dark crimson; foliage dark. 1 ft. Pkt. \$0 10
- Dwarf, Mixed. Selected from the best combs. 1 foot..... 10

PLUMOSA (Plumed Cockscomb)

- Thompsoni magnifica. Yellow. 3 feet..... 10
- Thompsoni magnifica. Crimson. 3 feet..... 10
- Thompsoni magnifica. Mixed. 3 feet..... 10

Centaurea

The *Centaurea Cyanus* is one of the most popular annual summer flowers; easily grown by sowing seed in the open ground, and usually reseeds itself, coming up year after year. The *Imperialis* variety, when once grown, will always be grown; they last a long time when cut; extra-large blooming variety.

CYANUS (Cornflower, Ragged Sailor, Blue Bottle)

- Blue, Oz. Pkt. \$0 30 \$0 05
- White..... 40 05
- Rose..... 40 05
- Double Blue..... ¼ oz. 50c... 15
- Double, Mixed..... ¼ oz. 25c... 10

CENTAUREA IMPERIALIS (Imperial Sweet Sultan)

The finest of all, both in size and fragrance.

- White..... Pkt. \$0 10
- Rose..... 10
- Purple..... 10
- Mixed..... 10

VARIOUS VARIETIES WELL WORTH GROWING

- Americana. A splendid, tall-growing, native variety; flowers of immense size; lilac-purple..... Pkt. \$0 10
- Suaevolens. The Yellow Sweet Sultan. Very popular..... 05
- Moschata, Mixed. Sweet Sultans..... 05
- Candidissima. Sow the seed of this variety early indoors, and transplant in May. This has beautiful, silvery foliage and is used as an edging..... 10

CHINESE LANTERN PLANT. See *Physalis*, page 22.

Chrysanthemum

ANNUAL VARIETIES

These are very showy annuals, and comprise a great variety of colors; they are not to be mistaken for the large Japanese varieties one sees in the florists' windows, and are quite different. Sow seeds out-of-doors and thin out seedlings to about 8 to 10 inches apart.

- Coronarium, Double White..... Pkt. \$0 05
- Coronarium, Double Yellow..... 05
- Coronarium, Double Mixed. Of great value..... 05
- Tricolor, Single Mixed. Very bright colors..... 05
- Segetum (Evening Star). Pure golden yellow flowers..... 10

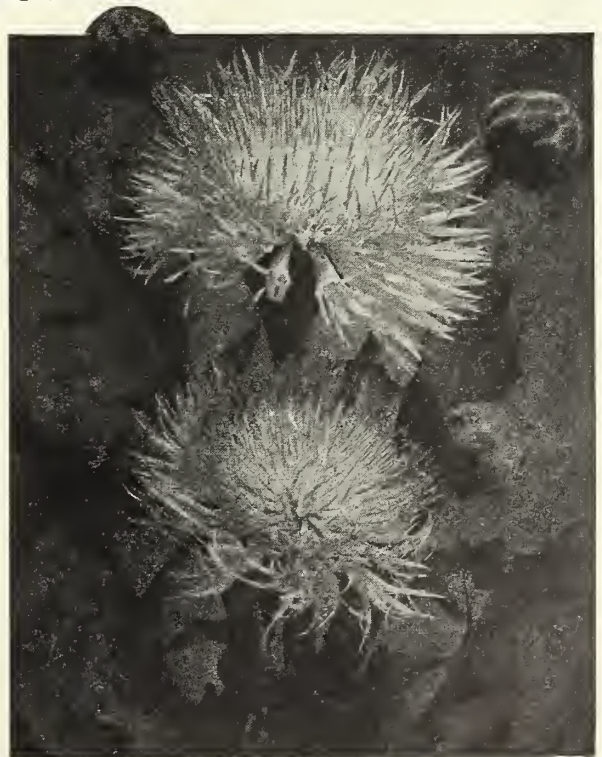
PERENNIAL VARIETY

- Leucanthemum (Shasta Daisy), Alaska. The largest of all..... Pkt. 15

Clarkia

A very pretty annual of easy culture, and should be grown more extensively, as it is worthy of a place in every garden; it likes partial shade. Sow out-of-doors in early spring, in beds; or it is suitable for borders in groups; useful for cutting.

- Double, Mixed..... Pkt. \$0 05
- Single, Mixed..... 05



Centaurea imperialis



Cineraria grandiflora

Cineraria

This is one of the most brilliant, showy, greenhouse plants in cultivation. If only one sowing is required, July is the best; but seed can be sown any time from May to September for a succession. When the seedlings are large enough to handle, showing the second leaf well, pot up into small pots, and re-pot them into larger ones as they grow, until they are finally placed in those in which they are to flower. They are best grown in a coldframe; make the final potting when bringing them into the greenhouse. Water occasionally with liquid manure, when the plants develop the flower buds, and never let them get dry. Our strains are the very best procurable.

	Pkt.
Hybrida grandiflora. Mixed.....	\$0 50
Hybrida stellata, Tall. Mixed; star-shaped flowers.....	25

Cleome gigantea (Giant Spider Plant)

A peculiar, tall-growing annual, attaining a height of 3 feet, with branching habit, each branch carrying a cluster of rosy carmine flowers with long, protruding stamens, which give it a spider effect. Suitable for large beds or for dotting through borders..... 10

Cobæa scandens (Cup-and-Saucer Vine)

A popular, very rapid-growing climber, attaining a height of from 20 to 30 feet in a season, covered with large, bell-shaped flowers. Suitable for covering arbors, walls or trunks of trees. Start seed indoors early, say about March, and cover lightly.

	Pkt.
White.....	\$0 15
Purple.....	10

Coleus

A very ornamental bedding plant, with beautiful, colored foliage; can be grown in the house also. It is a greenhouse perennial but can be grown to perfection the first season from seed. Sow early indoors, in a moist, warm atmosphere, and transplant when the ground and weather are suitable.

	Pkt.
Choice Large-leaved Hybrids. Beautiful colorings.....	\$0 25

COLUMBINE. See Aquilegia, page 12.

Convolvulus major (Common Morning-Glory)

Very popular, rapid-growing vine, 15 feet, covered with delicately colored flowers; will grow in any situation; of easy cultivation. Pkt.

Tall, Mixed. Single flowers, all colors.....oz. 20c.	\$0 05
Double-flowering. All colors.....	10

Dwarf, Mixed. These grow only 1 foot high and make a very showy bed, remaining in bloom a long time.....oz. 20c.	05
--	----

For other varieties of Morning-Glories, see Ipomæa, page 19.

Coreopsis grandiflora (Perennial Calliopsis)

Without exception, almost, this plant is the best value as a cut-flower in cultivation, having fine, long stems, and lasts a long time cut. It is a perennial, but if sown early indoors in the spring will bloom the first year. Has large, bright yellow flowers; the best of all. Pkt. 10 cts.

Cosmos

This is a very popular, late summer- and autumn-blooming annual. We have two strains, the extra-early flowering and the Mammoth Late. The Cosmos is a great bloomer, robust grower and a splendid cut-flower. The extra-early flowering variety does not produce flowers quite so large as the late, but it flowers much earlier and continues until frost. The seed should be sown in the spring in the open ground when danger of frost is past, and transplant to not less than 18 inches apart, in rows or in beds; when the plants are about a foot high, pinch out the center so as to make them grow in a bushy form.

EXTRA-EARLY FLOWERING

	Pkt.
White.....	\$0 10
Pink.....	10
Crimson.....	10
Mixed.....	¼ oz. 30c. 10

MAMMOTH LATE

	Pkt.
White.....	10
Pink (Lady Lenox).....	10
Crimson.....	10
Mixed.....	¼ oz. 20c. 10

Cyclamen

A great favorite as a winter and spring greenhouse and window plant. Sow seed in small boxes or pans, in a compost of leaf-mold, rotted manure and sand. The seed is usually sown in the early winter months, and when the young plants have made two leaves prick out into small pots; keep them growing steadily without a check, and they should bloom in ten to twelve months.

	Pkt.
Persicum, giganteum, Mixed.....	\$0 25
Papilio, or Butterfly. Edges of flowers beautifully frilled and waved. Mixed colors.....	25

Cypress Vine (Ipomœa Quamoclit)

This is a very popular annual climber, attaining a growth of about 15 feet. It has very delicate, fern-like foliage and an abundance of small, star-shaped flowers. Sow seed in May, but it should be soaked in warm water for a few hours.

Mixed Colors.....	95
-------------------	----



Mammoth Late Cosmos

Dahlia

Many doubt that these can be bloomed the same year from seed sown in the early spring. We have seen some beauties from seed sown the first of April. The Double sorts, of course, take longer than the Single.

- Double Large-flowering, Mixed.....\$0 10 Pkt.
- Single Large-flowering, Mixed..... 15

DAISY. See Bellis, page 14.

Delphinium (Perennial Larkspur)

For Annual Varieties, see Larkspur, page 19

What is more showy than the beautiful, tall, blue spikes of the Delphiniums standing erect in your mixed border or shrubbery? They are easily grown and adapt themselves to almost any situation. Seed can be sown indoors in early spring or in hotbeds in shallow boxes or seed-pans; transplant into flats about 3 inches apart, and before finally planting them out in the open ground place the flats in the open for a week or so.

- Belladonna. One of the prettiest in cultivation; clear turquoise-blue; an almost perpetual bloomer.....\$0 25 Pkt.
- Chinese, Blue. A compact variety, making loose sprays of gentian-blue flowers..... 05
- Chinese album. A white variety of the above..... 05
- Elatum (Bee Larkspur). Rich blue, dark center; 4 feet..... 10
- Formosum. Brilliant blue, with white center; very striking.. 10
- Formosum caelestinum. Pale blue, with white center..... 15
- Large-flowering Hybrids. Extra choice, from named single varieties; immense spikes..... 15
- Zalil. Sulphur-yellow..... 25

Digitalis (Foxglove)

A hardy perennial of great value for planting amongst shrubbery and half-shady places. Seed can be sown in the spring, or July and August, and transplanted where desired, or it can be sown where the plants are to remain.

- Gloxinioides. This is the finest species, bearing beautifully spotted, large flowers. Pkt.
- Purple.....\$0 10
- Rose..... 10
- White..... 10
- Mixed..... 10

Datura cornucopia

(Trumpet Flower, or Horn of Plenty)

A very ornamental annual of bush form, growing about 2½ feet high, bearing large, white-and-purple trumpet-shaped flowers, delightfully fragrant. Sow seed early and transplant out as soon as the ground is warm. Pkt. 10 cts.

Dianthus, or Pinks

The Dianthus family in all its varieties is a popular garden flower. Pinks are especially of exceptional value for cutting and fragrance; they have few rivals. Seed may be sown out-of-doors as soon as all danger of frost is past. The biennial varieties usually survive the winter with a little protection, but the Plumarius varieties are perfectly hardy.

- Chinese Double, Mixed. Produces clusters of fine, double flowers in a great variety of color.....½oz. 30c..\$0 05 Pkt.
- Japanese Double, Mixed. Beautiful colors..... 05
- Japanese Double, Fireball. Brilliant, dark scarlet; very double..... 10
- Japanese Double, White..... 10
- Japanese Double (Mourning Pink). Very dark crimson, fringed white..... 10
- Japanese Single, Punctatus (Princess Pinks). Beautiful colors, with fringed edges..... 10

HARDY GARDEN PINKS (Clove-scented)

- Pheasant's Eye. Single, fringed, mixed..... 05
- Plumarius Double, Mixed. Double Hardy Pinks. Beautiful colors..... 10
- Plumarius semperflorens. Perpetual Pink. Double and semi-double, mixed..... 20
- Plumarius fl. pl., Scoticus. Very hardy; double; 1 foot high; very strongly perfumed..... 25

Dictamnus Fraxinella (Gas Plant)

Pkt.

An old-fashioned hardy perennial plant of bushy form, 2½ feet high; the leaves when rubbed give out a lemon odor. Sow seed in spring, or July and August, and transplant where the plants are to remain. When once established, they do not care to be moved. Red flowers.....\$0 10

Dimorphotheca aurantiaca hybrida

(African Golden Daisy)

A very showy annual, from South Africa; will grow well in any situation; likes plenty of sun. The flowers are daisy-like, of different shades of glistening salmon-orange, yellow, and white, and are borne in profusion on compact, bushy plants about 1 foot high; of great value and very showy..... 15

Dolichos Lablab (Hyacinth Bean)

A rapid-growing, climbing annual, bearing pea-shaped blossoms and ornamental seed-pods. Grows 12 to 15 feet high. Sow out-of-doors where they are to remain. Mixed, purple and white.....oz. 25c.. 05



Eschscholtzia Californica

Eschscholtzia (California Poppy)

A very popular garden annual, easily grown from seed sown in the open in May where the plants are to remain. The majority of varieties grow about 1 foot high.

- Californica, Yellow. Rich yellow.....oz. 40c..\$0 05 Pkt.
- Californica, White. Creamy white..... 05
- Mandarin. Red and orange; beautiful..... 05
- Rose Queen. Beautiful rose-carmine..... 10
- Dainty Queen. Delicate pale pink..... 10
- Mixed. All colors.....oz. 40c.. 05

Euphorbia variegata (Snow-on-the-Mountain)

Very ornamental annual, grown for the pretty foliage, as the flowers are insignificant. Green foliage, veined and margined white.....oz. 40c.. 05

FEVERFEW. See Matricaria, page 20.

FORGET-ME-NOT. See Myosotis, page 21.



Gaillardia grandiflora

Four-o'Clock (Marvel of Peru)

An old-fashioned garden flower, of bushy growth, bearing Pkt. numerous flowers of various bright colors. Mixed...oz. 20c...\$0 05

Gaillardia (Blanket Flower)

The Gaillardia is very popular whether the annual or perennial variety is sown. Both are very bright and showy, and of great value as cut-flowers.

- Picta, Single, Mixed. Annual. Fine, brilliant colors.....\$0 05
- Lorenziana, Double, Mixed. Annual. Exquisite, double-flowering strain..... 05
- Grandiflora, Mixed. Perennial. One of the most showy hardy plants for the garden..... 10

Geranium zonale, Mixed

An interesting plant to grow from seed by sowing the seed early in the house and planting out as soon as the plants are well in the second leaf. Don't plant out until the end of May. Best varieties..... 10

Geum atrosanguineum fl.-pl.

A hardy perennial plant of great value, bearing a profuse number of double, dark crimson flowers; good for cutting practically all summer. The best variety..... 10

Globe Amaranth

This is a well-known everlasting annual flower, easily grown. The blooms are cut before fully open, hung up and dried. They are called by many "Bachelor's Buttons."

- Flesh-color.....\$0 05
- Purple..... 05
- White..... 05
- Mixed..... ¼ oz. 25c... 05

Godetia

An attractive, hardy annual; does well in the shade; forms a nice bush about 1 foot high, with flowers of very bright colors. Sow in the open when danger of frost is past.

- Crimson Glow. Beautiful, dark crimson..... 10
- Duchess of Albany. Pure white..... 05
- Rosamund. Shell-pink..... 10
- Mixed. All colors..... ¼ oz. 20c... 05

Gourds

Rapid-growing, climbing annuals, with ornamental foliage and peculiarly shaped fruits. 15 to 20 feet. Pkt. Mixed.....oz. 25c...\$0 05

Gypsophila (Baby's Breath)

A popular, free-growing plant, with very graceful, delicate flowers and foliage; used for mixing with other cut-flowers to give a soft effect.

ANNUAL VARIETIES

- Elegans grandiflora alba. Large; white.....oz. 25c...\$0 05
- Elegans grandiflora, Rose. Soft pink..... 05
- Elegans grandiflora, Carmine..... 05

PERENNIAL VARIETIES

- Paniculata. White flowers; fine for bouquets..... 15
- Paniculata fl.-pl. Double form of the above..... 20

Helianthus (Sunflower)

The single Sunflowers are very useful cut-flowers. Sow seed in the open ground in April or May. The Cut-and-Come-Again or Miniature varieties are especially fine grouped in borders and for cutting.

- Single Cut-and-Come-Again, Stella. Golden yellow; Pkt. black center.....\$0 05
- Single Cut-and-Come-Again, Orion. Similar to the above, only petals are twisted..... 05
- Single Cut-and-Come-Again, Perkeo. Dwarf, compact bushes; yellow..... 10
- Single Cut-and-Come-Again, Mixed. Miniature Sunflowers in shades of yellow with black eyes..... 05
- Double Cut-and-Come-Again. Flowers yellow; double and semi-double..... 10

Helichrysum (Straw Flower)

A very popular annual flower on account of its everlasting properties. Flowers intended for drying should be cut when partly open and suspended with the heads down. The plants should be not less than 1 foot apart to allow them to develop properly.

- Monstrosum, Double. An extra-large-flowering species. Pkt. White.....\$0 05
- Crimson..... 05
- Rose..... 05
- Mixed..... 05

Heliopsis Pitcheriana

A very desirable perennial plant for the border; grows from 3 to 4 feet high, bearing flowers of a deep golden yellow; very good for cutting.....\$0 10

Heliotrope

An old-fashioned, half-hardy perennial, which is very popular as a summer bedding plant; it can be grown in a greenhouse also, giving the house a delightful perfume. Sow seed early indoors; by doing so you will have good plants for summer blooming.

Giant-flowering, Mixed. Very robust growth and fine, large Pkt. beads of flowers; the best.....\$0 10

Hesperis matronalis (Sweet Rocket)

A fine old-fashioned garden plant, attaining a height of 3 feet, and very free-blooming, giving large sprays of fragrant blossoms. The plants when through blooming require to be taken up and transplanted into fresh soil; by doing this you will get far better results Sow seed in spring.

- Purple.....\$0 05
- White..... 05

Heuchera sanguinea

A very fine perennial plant, growing about 1 foot high, with erect spikes of bright crimson flowers. A fine thing for cutting. 10

Honesty (Lunaria biennis)

A hardy biennial and much admired for its silver, oval-shaped seed pouches. Seed should be sown in June for the following year's blooming..... 10

Hollyhock

This is one of the most popular bardy plants in cultivation, and gives an effect to a garden that no other plant does. It is, without exception, the best plant for grouping amongst shrubbery or furnishing a background for other plants in a border. Seed sown in the spring will give excellent, strong plants for blooming the following year. They require protection, such as covering with leaves or straw the first winter. We offer the very best strain procurable, which is, without doubt, Cbater's.

- Double, White..... Pkt. \$0 10
- Double, Rose..... 10
- Double, Crimson..... 10
- Double, Scarlet..... 10
- Double, Yellow..... 10
- Double, Mixed. Extra choice..... 10
- Single, Mixed. Extra choice..... 05
- Single, Allegheny, Mixed. Petals beautifully laced and fringed; of very robust growth and extra-large flowers..... 10

Humulus (Japanese Hop Vine)

A very rapid-growing, annual climber, attaining a growth of from 20 to 30 feet in a season. The foliage is very ornamental, of thick growth, splendid for covering verandas, trellis, etc.; provides good shade and is not subject to being affected by insects of any kind.

- Japonicus. The green-leaved variety..... Pkt. \$0 05
- Japonicus variegatus. Beautiful, silvery variegated leaves; very ornamental..... 10

Hunnemannia fumariæfolia

(Giant Tulip Poppy, or Bush Eschscholtzia)

Although this is a perennial, it is treated as an annual. By sowing it indoors early in spring, it will bloom the end of July. It forms a nice bush, about 2½ feet high, bearing large, rich yellow, poppy-like flowers, and is a good flower for lasting in water a long time. Pkt. \$0 10

HYACINTH BEAN. See Dolichos, page 17.

Ipomœa (Moonflower, Morning-Glory)

See also Convolvulus, page 16

Climbers of very rapid growth, used for covering old tree stumps, trellises and arbors.

- Bona Nox (Evening Glory). Beautiful, large, rosy lilac flowers, opening in the evening..... Pkt. \$0 05
- Mexicana grandiflora alba. The giant white Moonflower very fragrant; opens after nightfall and remains open on cloudy days..... 10
- Rubra cœrulea (Heavenly Blue). A very beautiful variety, with immense, sky-blue flowers..... 10
- Setosa (Brazilian Morning-Glory). A very quick, robust-growing variety, covered with clusters of rose-colored flowers..... 10
- Quamoclit hybrida (Cardinal Climber). A splendid new hybrid between Cypress Vine and *Ipomœa coccinea*. This certainly is worthy of a trial. It is of strong, rapid growth, with very finely cut, fern-like foliage, which is in itself a treat to look at; but, in addition, has an abundance of dazzling bright scarlet flowers which come in clusters. It is well named on account of its color. Sow seed early; it requires to be basted in germination by filing or cutting a small notch in each seed..... 25

Imperial Japanese Morning-Glories

(Mixed)

These are, beyond all doubt, the finest of all the Morning-Glories; they are easily grown and in beautiful colors and size of flowers have no equal..... Pkt. oz. 25c... \$0 05

JAPANESE HOP. See Humulus, above.

JOSEPH'S COAT. See Amarantus, page 12.

KENILWORTH IVY. See Linaria, page 20.

Kochia tricophylla (Summer Cypress)

A very good annual, easily grown from seed sown thinly in the spring. It makes a nice hedge or can be grown as specimens on a lawn. Its color is light green, with finely cut leaves, and in late summer and fall it becomes a deep red; grows about 2½ to 3 feet high when grown in good soil..... Pkt. ¼oz. 20c... 05

Kudzu Vine (Pueraria Thunbergiana)

A Japanese perennial climber of very rapid growth, producing large, bold leaves of bright green which make a fine shade. It is a grand thing for covering dead trees and for verandas or trellis. The flowers are small and purple in color. Being a perennial, it attains a height of only about 8 feet the first year from seed, but when established it will grow 50 feet in one season..... Pkt. ¼oz. 30c... \$0 10

Lantana

This is a very fine greenhouse plant, or can be used for bedding out in summer; it is a continuous bloomer and makes trusses of bloom similar to the verbena, but of a varied assortment of colors, ranging from orange to rose. Sow seed early, say February or March, in the house.

- Mixed Hybrids..... Pkt. \$0 10

LADY'S SLIPPER. See Balsam, page 14.

Larkspur (Annual Delphinium)

These are very popular annuals, very ornamental and of graceful habit; they have very fine, fern-like foliage, and the flower-spikes are tall and erect, on good, strong stems, fine for cutting. They make a nice bed or dotted in clumps through a border, or in lines are very effective. Sow seed toward the end of April, and they will bloom from July till frost.

- Tall Branching. This is the best strain of Annual Larkspurs in cultivation..... Pkt. \$0 10
- White..... 10
- Flesh-color..... 10
- Rose..... 10
- Violet..... 10
- Mixed..... 10

Lavatera trimestris

This is an annual suitable for large borders; it is useful as a cut-flower, producing Mallow-like flowers in great abundance all summer. The seed can be sown out-of-doors in May where the plants are to remain and thinned out to about 15 inches apart; they grow about 2½ feet high.

- Red..... Pkt. \$0 05
- White..... 05



Double Hollyhocks

Lathyrus latifolius (Perennial or Everlasting Pea)

A very showy perennial climber, suitable for covering old stumps, fences, etc. The flowers are not fragrant.

Mixed.....Pkt. \$0 10

Leontopodium alpinum (Edelweiss)

An odd, little, hardy plant well-known to tourists who have been in Switzerland. It is of dwarf habit, with white leaves; both leaves and flowers are of a plummy or feathery nature. Well worth a trial; it is best suited to rockeries.

15

Linum rubrum (Scarlet Flax)

A very old, but very effective and showy annual, with bright scarlet flowers. Sow out-of-doors.

05

Linaria Cymbalaria (Kenilworth Ivy)

A pretty, hardy, trailing plant, suitable for hanging-baskets, vases or pots; flowers violet.

10

Lobelia

For edging beds or for pots and baskets there is nothing nicer than Lobelia. Sow seed early indoors, in a small box or pot, and transplant when large enough to handle; set out when weather is warm. It may be sown out-of-doors, also.

Crystal Palace compacta. Deep blue; compact growth; dark foliage. Pkt. \$0 10

Emperor William. Erect; light blue; very fine. 10

Erinus gracilis. Of trailing habit; light blue. 05

Erinus alba. White flowers. 10

Cardinalis. A tall, hardy perennial variety, with fine large spikes of bright scarlet flowers; likes a moist situation. 10

LOVE-IN-A-MIST. See Nigella, page 21.

LOVE-LIES-BLEEDING. See Amaranthus, page 12.

Lychnis Chalcedonica

A fine, hardy perennial for massing in beds or borders, growing 2 feet high; very floriferous; bright scarlet flowers.

05



African Marigolds

Lupins

ANNUAL VARIETIES

These are very desirable showy plants, suitable for borders or beds, growing about 2 feet high and producing large, erect-growing spikes of pea-like flowers; they like partial shade and are valuable for cutting. 2 to 3 feet.

	Oz.	Pkt.
Blue.....	\$0 25	\$0 05
Rose.....	25	05
White.....	25	05
Yellow.....	25	05
Mixed.....	25	05

PERENNIAL VARIETIES

These are worthy of a place in your hardy garden, growing rather taller than the annual varieties.

Polyphyllus, Mixed.....	30	05
-------------------------	----	----

Marigold

These are very old-fashioned garden annuals; of course the majority in colors are of the yellow shades; but, although there are many other beautiful yellow flowers, you cannot afford to omit the Marigold. They are easily grown and give an abundance of flowers right up to frost.

AFRICAN VARIETIES

Pkt.

Double Orange. Tall; rich orange.....\$0 05

Double Lemon. Tall; pale yellow..... 05

Double, Pride of the Garden. Dwarf; rich yellow..... 10

Double, Eldorado. Large, quilled flowers; yellow shades..... 05

Double, Mixed. Tall; all colors.....¼oz. 20c... 05

FRENCH VARIETIES

Dwarf Gold-striped. Brownish red, striped yellow; very bright, free-flowering..... 10

Legion of Honor (Little Brownie). A very popular dwarf single Marigold; deep golden yellow, marked with a large spot of crimson velvet.....¼oz. 20c... 05

Dwarf, Mixed. A great variety of colors.....¼oz. 20c... 05

MARVEL OF PERU. See Four-o'-Clock, page 18.

Matricaria Capensis alba plena

(Feverfew)

Although a perennial, if sown early indoors will bloom the same year. Very free flowering, producing a great quantity of double, white flowers. A good bedding plant, 18 inches high... 10

Maurandia Barclayana

A very pretty climbing plant, growing about 10 feet, giving an abundance of pretty, gloxinia-like blooms of various colors. The plants can be lifted before frost and brought into the greenhouse and kept for the following year. Mixed..... 10

Mesembryanthemum crystallinum

(Ice plant)

A dwarf, trailing plant which is very pretty; it is an annual and blooms freely from seed sown in the open when cold weather has disappeared; glistening white flowers and the leaves glisten in the sun just like ice..... 05

Mignonette (Reseda odorata)

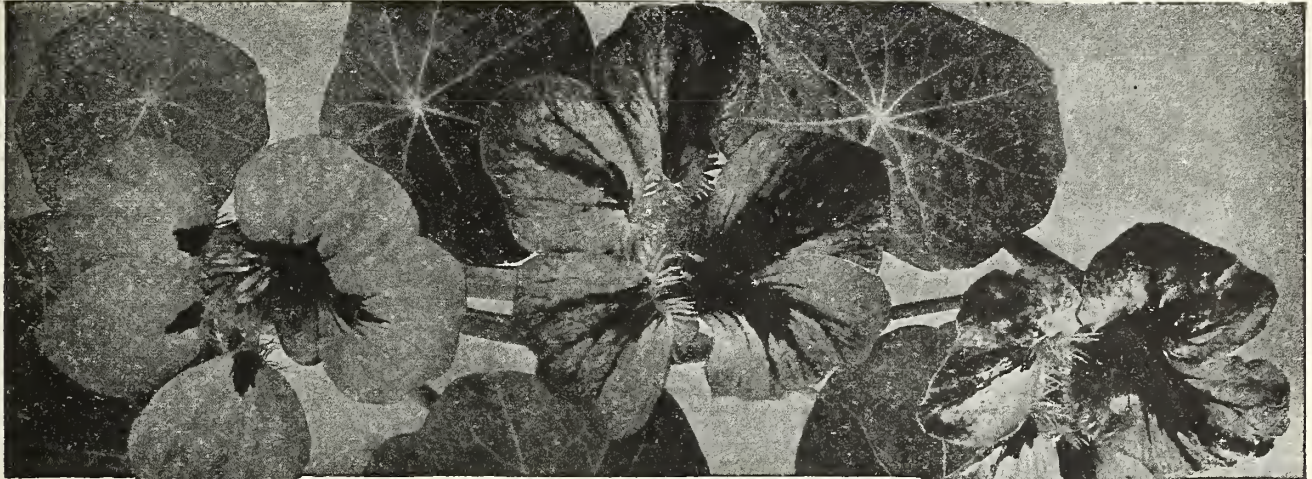
We need not mention much about this old favorite flower. Its fragrance has gained it popularity. We have selected what we consider to be the best varieties both for fragrance and size of spikes. Sow in open ground where required and thin out. Can also be grown very successfully in pots.

Reseda odorata grandiflora. The old variety; small-spiked but the sweetest-smelling.....oz. 15c... \$0 05

Defiance. One of the best, making huge, erect spikes, and very fragrant..... 10

Machet. (Dwarf.) Pyramidal growth; very sweet and an abundant bloomer..... 10

Goliath. A very robust but dwarf-growing variety, producing fine, erect spikes of very bright color..... 15



Elliott's Dwarf Nasturtiums

Mimosa pudica (Sensitive Plant)

Usually grown in pots; peculiar for its sensitive properties; Pkt. when touched, the leaves close up and droop. It is of ornamental growth..... \$0 05

Mimulus

A very showy, half-hardy perennial, fine for greenhouse or moist, shady situations; blooms the first season if started early indoors.

- Tigrinus (Monkey Flower).** Beautifully tigered and spotted varieties..... 10
- Moschatus.** The old-fashioned Musk Plant. Yellow; very fragrant..... 10

Mina lobata

A very pretty, half-hardy, annual climber, bearing tube-shaped flowers in great profusion; when the flowers open first they are bright red, but when fully expanded turn yellow to creamy white..... 10

Momordica

A peculiar climbing vine, with ornamental foliage and fruits. The fruits are golden yellow, warted, and when ripe, open, showing the seed and the bright red interior.

- Balsamina (Balsam Apple).** Round, apple-shaped fruit..... Pkt. \$0 05
- Charantia (Balsam Pear).** Pear-shaped..... 05
- MONKSHOOD.** See Aconitum, page 12.
- MORNING-GLORIES.** See Ipomœa, page 19, and Convolvulus, page 16.
- MOONFLOWERS.** See Ipomœa, page 19.

Myosotis (Forget-Me-Not)

This is an old-fashioned, very popular little flower, blooming in the spring; it is very suitable for massing in beds or for edging. Seed may be sown any time from spring to midsummer, and must be protected during the winter months.

- Alpestris, Indigo-Blue.** The best dark blue variety..... Pkt. \$0 10
- Alpestris robusta grandiflora.** A strong-growing variety, of good clear light blue..... 10
- Alpestris, Victoria.** A great favorite of compact growth; lovely, clear azure-blue..... 10
- Palustris.** The True Forget-me-not; likes a damp place; of strong, sturdy growth; clear blue flowers..... 10

Nicotiana

An easily grown annual, very showy either in beds or in clumps in borders amongst other plants. Sow seed early inside and transplant when the ground is warm outside

- Affinis.** White flowers; very fragrant..... Pkt. \$0 05
- Sanderæ Hybrids.** A great variety of colors; flowers of great substance, and remains in bloom a long time..... 10

Nasturtiums

TALL OR CLIMBING VARIETIES

Popular climbers for verandas, trellises, against fences, etc.

- | | Oz. | Pkt. |
|---|--------|--------|
| King Theodore. Deep crimson-maroon..... | \$0 20 | \$0 05 |
| Pearl. Creamy white..... | 20 | 05 |
| Prince Henry. Light yellow, marbled scarlet..... | 20 | 05 |
| Scarlet. Bright scarlet..... | 20 | 05 |
| Vesuvius. Rich salmon; dark-leaved..... | 20 | 05 |
| Mixed, All Sorts. A grand mixture. Lb. \$1, ¼ lb. 30c... | 20 | 05 |
| Variiegated Sorts, Mixed. Beautiful, silver-spotted foliage..... | 20 | 10 |

DWARF NASTURTIIUMS

- | | | |
|---|----|----|
| Empress of India. Dark crimson..... | 20 | 05 |
| King of Tom Thumbs. Bright scarlet..... | 20 | 05 |
| Pearl. Creamy white..... | 20 | 05 |
| Prince Henry. Cream, spotted and tipped red..... | 20 | 05 |
| Rose. Soft carmine-rose..... | 20 | 05 |
| Vesuvius. Salmon-rose; dark foliage..... | 20 | 05 |
| Mixed, All Sorts.Lb. \$1.25, ¼ lb. 40c... | 20 | 05 |
| Variiegated-leaved Mixed. Very pretty..... | 20 | 10 |

LOBB'S CLIMBING NASTURTIIUMS

These are more vigorous growers than the tall varieties, and the flowers are slightly smaller, but of a great variety of colors.

- Mixed**..... Lb. \$1.50, ¼ lb. 60c, oz. 20c... \$0 05

Nemophila insignis

A very pretty annual of easy culture. Sown early in the spring, will flower about July, giving an abundance of flowers for a long period. Bright blue; makes a very nice pot-plant... 05

Nigella (Love-in-a-Mist)

A compact-growing annual, with very finely cut foliage and peculiarly formed flowers. Sow seed in the open in May, and thin out to about 6 inches apart.

- Damascena.** Blue. A good blue..... Pkt. \$0 05
- Miss Jekyll.** A bright, cornflower-blue; one of the best varieties..... 10

Penstemon

This is somewhat like a foxglove, but probably not known so well, although it should be. It is a very attractive perennial, growing 2 to 3 feet, and the colors are far more brilliant than those of the foxglove. Sow seed in early spring, in a pan or box, and transplant out-of-doors about the middle of May.

- Large-flowering, Mixed.** Comprising many strains and beautiful colors..... Pkt. \$0 15

Pansies

These little plants are favorites with everyone. Seed can be sown in the autumn or spring. The autumn-sown seed flowers in early spring, and if the old blooms are kept pulled off, they will continue giving large blooms quite a long time. Sow seed thinly, during July or August, in a well-prepared bed, partly shaded, of a size convenient for erecting a frame around to protect for the winter, if you prefer; or they can be covered well with salt-hay as soon as the cold weather sets in. By this treatment you will have strong, sturdy plants for setting out the following spring. Pansy seed can also be sown in the early part of the year, say February or March—the earlier the better,—in flat boxes or seed-pans and placed in the greenhouse, hotbed or window; keep them transplanted often so as not to allow them to get soft and spindly; give them air when the opportunity affords. In the varieties we offer you have the best selection that can be desired; it is not a large one but the best.

Elliott's "Springdale" Mixture

This is our own mixture made up of the very best varieties both in Pkt. color and size. We take care not to put in too much of any one color, which is so often found in mixtures. It is, without doubt, the best selection you can have. ¼ oz. \$1.50... \$0 25

Masterpiece. Very large, richly colored blooms, with beautifully curled and crinkled edges. ½ oz. \$1.00... 25

Madame Perret. A fine strain; large flowers, principally composed of wine and red shades. ½ oz. 75c... 25

Large English, Mixed. The old-fashioned Faced Pansies. ¼ oz. 75c... 10

Giant Trimardeau

This strain of Pansies is remarkable for its immense flowers which grow well above the foliage, and the plants are of a vigorous and compact growth; the flowers are very often beautifully blotched. There are a great many varieties in this strain, far more than we list, but those we mention are really the pick of the bunch. Pkt.

- Adonis.** Beautiful light blue; the best of its color. . . \$0 10
- Emperor William.** A fine shade of cornflower-blue; very showy. 10
- Fire King.** Deep golden yellow; upper petals purple. 10
- Golden Queen.** A pure, rich yellow; very fine. . . 10
- Lord Beaconsfield.** Large; purple violet, upper petals shading to white. . . 10
- Snowflake.** A beautiful, satiny white. 10
- Mixed.** Comprises all varieties of Trimardeau Pansies; a grand combination of colors. ¼ oz. 75 cts. 10

Various Other Pansies of Merit

- Faust (King of the Blacks).** The "black" Pansy. 10
- Peacock.** Large; peacock-blue, edged with white. 10
- Psyche.** A beautiful tufted variety; deep violet, evenly edged with white; very unique. 10

Physostegia Virginica

A very pretty, hardy perennial plant, growing in bush form, 3 to 4 feet, high, and producing quite a number of erect spikes of pink blooms good for cutting. Treat the same as the majority of perennials. 10

Physalis Francheti

Chinese Lantern Plant

A summer-flowering perennial which is very ornamental on account of its producing sprays of fruit which turn bright red and resemble small lanterns 10

Polyanthus

A free-flowering perennial which beautifies your beds or borders in the spring. Forms trusses of flowers on an erect-growing, strong stem about 6 to 8 inches high; the colors are very bright and effective. Sow seed in early spring in boxes and transplant to open ground when large enough; they can also be sown in a prepared seed bed in the summer for blooming the following spring. Pkt. Large-flowering, Mixed. \$0 10



Elliott's "Springdale" Pansies

Petunias

It is hard to beat the Petunia for its variety of colors and its flowering qualities. No matter what garden you visit, you will almost always find a bed or border of Petunias, or pots and porch-boxes full of them. It is one of the most popular flowers for summer, blooming until late in the autumn. It is easily grown from seed, but great care should be taken in the beginning as regards watering, as the seed, being so small, is very often washed out by heavy watering. Sow seed in a hotbed or coldframe, in seed-pans or boxes, during April and May; or these boxes can be placed in a sunny window. When the seedlings are large enough to handle, transplant in other boxes or pots, and when the weather and ground are warm enough outside, plant about 1 foot apart in beds or borders. This refers to the finer double and single sorts; the bedding varieties can be sown out-of-doors in May.

- Single Large-flowering, Mixed. Superb colorings of great variety; not fringed.....\$0 25
- Single Large-flowering Fringed, Mixed. Of extra-large size; beautiful colors and richly marked deep throats; finely fringed..... 35
- Double Large-flowering, Mixed. An excellent strain, giving a great percentage of double flowers..... 25
- Double Large-flowering, Fringed, Mixed. An unsurpassed strain, of beautiful colors and a very high percentage of double flowers..... 50

SINGLE BEDDING VARIETIES

Very popular for sowing in masses out-of-doors.

- Howard's Star. A rich crimson, showing a regular star in the center.....\$0 10
- Rosy Morn. The very popular pink bedding Petunia, with white throat..... 10



Single Large-flowering Petunias



Phlox Drummondii

- SINGLE BEDDING PETUNIAS, continued**
- White, Pure. Compact grower; very pretty.....\$0 10
 - Striped and Spotted. A very good mixture, and most popular for bedding..... 10

Phlox Drummondii

One of the most popular annuals on account of its easy cultivation and very showy, brilliant-colored flowers; grows 1 foot high. Seed can be sown in the open ground any time after the middle of May, and the plants thrive better by being transplanted from where they were originally sown. When the young plants are about 6 inches high, it is a good plan to pinch them so as to make them branch, thus producing a far better show of bloom.

- Large-flowering Varieties.**
- White.....\$0 10
 - Scarlet..... 10
 - Rose..... 10
 - Pink..... 10
 - Crimson..... 10
 - Purple..... 10
 - Yellow..... 10
 - Mixed..... 1/4 oz. 25c. 10

- Dwarf Varieties.** These grow to 6 to 8 inches high.
- Rose..... 15
 - Scarlet..... 15
 - White..... 15
 - Mixed..... 1/4 oz. 50c. 15

PHLOX, PERENNIAL (P. decussata)

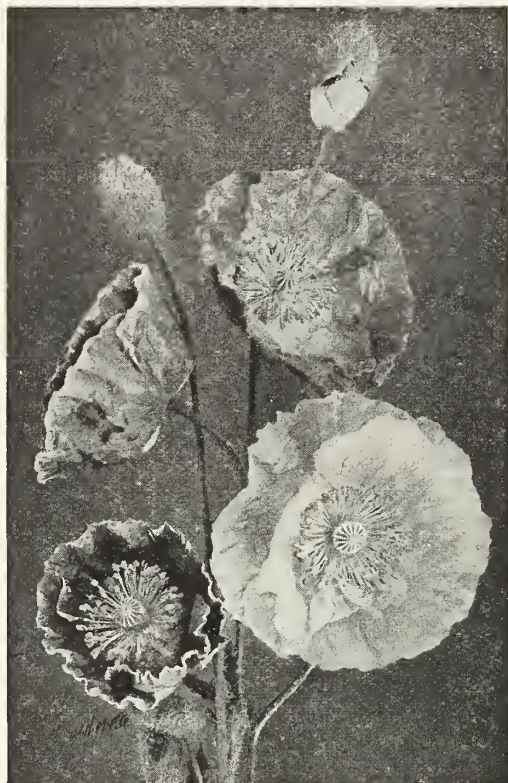
This is quite distinct from the preceding variety, being a tall perennial. We offer only the mixed colors in this class, as it does not come true to color from seed; to those wishing to separate colors we recommend buying plants, which we offer in great variety, in our Fall and Spring Catalogues.

- Large-flowering, Mixed.....\$0 10

Platycodon grandiflora

A very good, hardy perennial for planting in mixed borders or shrubbery; it is a profuse bloomer, producing large, bell-shaped flowers; it is of great value and easily raised from seed. A sowing in early spring will give you blooming plants in August.

- Blue.....\$0 05
- White..... 05



Shirley Poppies

Poppies

Poppies are among our most popular summer flowers; they should be sown thinly in lines, patches or beds, as soon as the ground is warm in the spring, where they are to remain as they do not stand transplanting. When required as cut-flowers they should be picked early in the morning before opening.

SINGLE ANNUAL VARIETIES

Admiral. A fine, large, pure white, with a bright scarlet band around the top; very attractive.....	Pkt.	\$0 10
Danebrog. A fine, large, brilliant scarlet, with a white spot on each petal forming a white cross.....	10	
Miss Sherwood. Beautiful, satiny white, shading to rose.....	10	
Shirley, Improved. This is one of the best of the Single Poppies, comprising many most delicate shades, ranging from pure white through delicate pink to rose and crimson—a great variety of colors.....	oz 50c...	10
The Bride. A fine, large, pure white.....	oz 30c...	05
Tulip Poppy (Glaucum). Like a scarlet tulip; magnificent..		10
Virginian. Large, fringed flowers of pure white, edged with pink; beautiful.....		10
Mixed. A grand mixture of Annual Poppies.....	oz 25c...	05

DOUBLE ANNUAL VARIETIES

American Flag. Huge flowers; snow-white, bordered with scarlet; very attractive.....	Oz.	Pkt.	\$0 30	\$0 05
Cardinal. Carnation-flowered; cardinal-red; beautifully fringed.....	30	05		
Mikado. Resembling a large chrysanthemum, with beautiful, curved petals; scarlet and white.....	30	05		
White Swan. A beautiful, fringed, double, pure white.	30	05		
Carnation-flowered, Mixed. A fine mixture of Double Fringed Poppies.....	25	05		
Peony-flowered, Mixed. Large, double, globe-shaped flowers in a great variety of colors.....	25	05		

PERENNIAL POPPIES

These should be sown in early spring out-of-doors. The Iceland varieties, being perennial, will bloom the first year; the Oriental, when they start new growth in the fall, should be transplanted to their permanent positions. As they die down during the hot weather,

PERENNIAL POPPIES, continued

they should be marked, so as to avoid disturbing the mdring the summer.	Pkt.	
ICELAND (nudicaule), White	\$0 10	
Orange-scarlet	10	
Yellow	10	
New Hybrids, Mixed	15	

GIANT ORIENTAL POPPIES

These often vary in color from seed. To get them perfectly true, it is best to buy plants, of which we offer a large collection in our Nursery Catalogue.

Scarlet (True)	Pkt.	\$0 15
Salmon-color		15
Giant Oriental Hybrids, Choice Mixed		15

Portulaca

This is one of the most popular dwarf annual plants in cultivation. It is suitable for edgings or carpeting beds or rockwork; it thrives best in a sunny position, is very easily raised from seed sown rather late when the ground is warm; the seed being so small we recommend mixing it with some fine, dry sand; by so doing it distributes the seed more thinly and more evenly over a given surface. The colors are very brilliant and somewhat resemble small roses.

Single Rose	Pkt.	\$0 05
Single Scarlet		05
Single White		05
Single Yellow		05
Single Mixed	oz. 50c...	05
Double Mixed. A small percentage comes single.....		25

Primroses

These are very pretty spring-flowering plants, and although perennial, require protection in the winter, such as covering with hay or leaves or, better still, place in a coldframe.

Auricula. Great favorites; beautiful colors.....	Pkt	\$0 15
Japonica (Japanese Primrose). Mixed.....		15
Vulgaris. (English Yellow Primrose).....		10

Primulas

Some of these are the most popular winter-blooming plants, such as the Obconica and Chinensis varieties. Seed should be sown in early spring, in shallow boxes or pans, well drained, and soil should be sand and leaf-mold, very finely screened through a sieve; cover seeds very lightly, and have the temperature about 65 degrees.

Chinensis (Chinese). Fringed. Mixed.....	Pkt.	\$0 25
Obconica. Large-flowered. Mixed.....		25
Obconica. Large-flowered Giant Mixed.....		50
Kewensis. A very pretty yellow Primula, bearing tall spikes with fragrant yellow blooms in whorls; splendid pot-plant for the house.....		25

Pyrethrum

A very attractive, hardy perennial, bearing large, daisy-like blooms of various colors, ranging from white to deep red, with bright yellow centers. It is a splendid cut-flower, lasting for a long period. No garden should be without it.

Large-flowering Single, Mixed	Pkt.	\$0 15
Large-flowering Double, Mixed		25
Aureum (Golden Feather). Beautiful, golden yellow foliage; principally used for edging.....		05

Rhodanthe

A very pretty little annual Everlasting, of much more delicate texture than the Helichrysum; very good for pot culture.

Mixed	Pkt.	\$0 05
--------------------	------	--------

Ricinus (Castor-Oil Plant)

A free-growing annual, very tall, with huge leaves. Very ornamental for planting in centers of beds, or as single specimens they are most suitable.

Africanus. Very large, green leaves.....	Pkt.	\$0 05
Cambodgensis. With dark stems, and leaves bronze-colored. 5 feet.....		05
Gibsoni. Deep red foliage. 5 feet.....		05
Zanzibarensis, Mixed. Enormous leaves of great beauty in a variety of colors.....	oz. 25c..	05
Good Mixed. Many varieties.....	oz. 20c..	05

Rudbeckia (Coneflower)

Newmanii. A very showy perennial, with large flowers of deep yellow with black cones; a grand autumn-flowering plant.....
 Pkt. | 15 |

Bicolor superba. An annual variety of great merit; bright yellow, with brown disk; very good for cutting.....		10
--	--	----

Salpiglossis (Painted Tongue)

This plant is not known so much as it should be; it is of easy culture and as a showy plant in the garden it has few equals; the flowers are borne on strong, stiff stems and somewhat resemble a petunia, but the texture of the Salpiglossis flower is very much stronger than the petunia; it is fine for cutting, and the colors are unique. The seed should be sown early in the spring in a hotbed or window, and transplanted out-of-doors as soon as all danger of frost is past. The strain we offer is the best procurable both for color and size. Pkt. Mixed.....\$0 10

Salvia (Scarlet Sage)

We need not say much about this great favorite, only that the seed we offer is the best procurable. It is best to start Salvia seed early, say February or March, in a hotbed or in the house, and transplanted to the flowering quarters as soon as the weather becomes settled and warm; the seed can also be sown out-of-doors in May. Pkt. Splendens. Fine scarlet; 3 feet.....\$0 10
 Splendens, Bonfire. Of compact growth, attaining a height of 2 feet, this variety produces an abundance of fine, large spikes of bloom, well above the foliage, of brilliant scarlet. One of the most popular varieties grown..... 10
 Splendens, Zurich. A popular, early-flowering, dwarf variety. 20

Schizanthus Wisetonensis (Butterfly Flower)

A very popular annual both for garden and pot culture. It is very easily grown from seed sown early in the spring for summer blooming, and also can be sown in the autumn for winter and spring blooming. It can also be grown to perfection in hanging-baskets. It is such a profuse bloomer that the foliage can hardly be seen; the flowers resemble somewhat certain varieties of orchids, and are of the prettiest blends of colors imaginable. This is one of the best strains; profuse in bloom and in a great variety of colors.....\$0 20

Scabiosa (Mourning Bride)

An annual which should be grown more generously than it is, because as a cut-flower it has no equal. It attains a height of 2 feet, and the flowers are double with fine, long, straight stems. It is fragrant to a certain extent. It is easily started from seed and is the better of being transplanted from the seedling bed to its flowering quarters. No garden should be without some of this valuable annual. Pkt. White.....\$0 05
 Rose..... 05
 Scarlet..... 05
 Mixed..... $\frac{1}{4}$ oz. 25c... 05

Stocks

A summer flower-garden is not complete without a few Stocks. For fragrance they have few equals; for colors and for cutting they are splendid and easily grown. Sow seed from February to April, and when big enough place in small pots for a time before setting out in the ground. The strains we offer are of the very best from pot-grown plants, and have a very high percentage of double flowers.

Large-flowering Ten Weeks. This class is the best for early summer blooming. Pkt. White.....\$0 10
 Flesh..... 10
 Rose..... 10
 Crimson..... 10
 Light Blue..... 10
 Mixed..... 10

Cut-and-Come-Again Ten Weeks. A perpetual-blooming class, of branching habit, giving a great profusion of fine flowers. They bloom splendidly late in the season.

White..... 15
 Flesh..... 15
 Rose..... 15
 Violet..... 15
 Light Blue..... 15
 Crimson..... 15
 Mixed..... 15

Beauty Stocks. These are giant-flowering, growing about 2 feet high and are excellent for growing during the winter months. For this purpose the seed should be sown in July or August; if sown in early spring, they bloom from July till frost. Pkt. Mixed Colors. A very choice mixture.....\$0 15



Sweet William

Stokesia cyanea (Cornflower Aster)

A good hardy perennial, of great value as a cut-flower. The plant grows about 15 inches high, bearing lavender-blue cornflower-like blossoms in great profusion, from July till frost. Splendid for the hardy border..... $\frac{1}{4}$ oz. 30c...\$0 10
 SWEET ROCKET. See Hesperis, page 18.

Sweet William

A very popular hardy perennial for beds or borders. Very easily raised from seed, and for colors and cutting purposes it is excellent. Pkt. Single Mixed Our best mixtures procurable.....oz. 70c...\$0 05
 Double Mixed..... $\frac{1}{4}$ oz. 30c... 10

Verbena

A splendid summer-flowering plant, and for beds and massing it has but few equals. Seed should be sown in the hotbed or house, early in the spring, and transplanted out-of-doors in May. Seed may also be sown in the open in May, and will flower about July.

Large-flowering Pkt. White.....\$0 10
 Blue..... 10
 Striped..... 10
 Scarlet..... 10
 Mixed..... 10

Vinca (Madagascar Perwinkle)

A very ornamental, free-flowering plant, with deep green, glossy foliage, and bright, single blossoms in great profusion. Sow seed early indoors and transplant when the weather is warm. Pkt. Pure White.....\$0 10
 White with Rose eye..... 10
 Rose..... 10

Zinnias

The Zinnia is by far one of the most popular of summer-flowering annuals. For making a good show of bloom in the garden it has no equal. The colors are brilliant and dazzling, particularly the crimsons and scarlets. There are several strains of Zinnias, but we do not list them; we have chosen the best, which is an improved giant-flowering strain which has no equal.

Giant Double— Pkt. Golden Yellow.....\$0 10
 Sulphur-Yellow..... 10
 Crimson..... 10
 Scarlet..... 10
 Flesh-color..... 10
 Mixed..... $\frac{1}{4}$ oz. 30c... 10

SWEET PEAS

In compiling our list of Sweet Peas, we have gone through the varieties, of which there are hundreds on the market at the present day, and quite a few are identical with each other. We have selected the best varieties in each class as to color and quality of flowers; we have

done this to help our customers make as good a selection as can be obtained anywhere. There are two classes, the "Spencer" or "Orchid-flowered" and the "Grandiflora" varieties. The first mentioned are much larger in every respect, in length of stem, size of bloom, and often bear four blooms to a stem. They are also beautifully waved, while the others are smaller flowers not waved, but are just as fragrant, and, of course, are not so expensive.

CULTURE OF SWEET PEAS

1 oz. will sow about 35 feet in a single line

Sow seed as early in the spring as the ground can be prepared; select a sunny situation, as they like it. The main thing in growing Sweet Peas successfully is to keep the roots deep and cool. To accomplish this, the soil should be dug from 1½ to 2 feet deep, and incorporate with it some well-pulverized, rotted manure and, if convenient, a little bone meal. When this is done open a trench, or furrow, about 6 inches deep, and sow seed at the bottom of this, in a line, placing the seeds about 3 to 4 inches apart, cover about 1 inch and press down firmly with a board. As the vines grow, this 6 inches of furrow can be filled in gradually by placing the soil carefully around the vines, and when doing this filling-in process a little bone meal will be beneficial. When the vines attain a height that they begin to fall over, they require some wire netting or brush, the latter preferred, which should be from 5 to 6 feet high. Keep the plants well watered during the hot weather, and keep picking the blooms, as it prevents their going to seed and lengthens the flowering period.

The 12 Following Varieties Select Grandiflora Sweet Peas are "The Pick of the Bunch"

1 PKT. EACH FOR 40 CTS., POSTPAID. 1 OZ. EACH FOR \$1.50, POSTPAID

Black Knight. Maroon.
Blanche Ferry. Pink and white.
Dorothy Eckford. Pure white.
Flora Norton. Light blue.
Lord Nelson. Dark blue.
Helen Pierce. White, marbled blue.

Hon. Mrs. Kenyon. Yellow.
King Edward VII. Crimson.
Lady Grisell Hamilton. Lavender.
Lovely. Pale pink.
Miss Willmott. Deep orange.
Queen Alexandra. Scarlet.

ANY OF THE ABOVE VARIETIES, PKT. 5 CTS., OZ. 15 CTS., ¼ LB. 50 CTS., POSTPAID

Spencer or Giant Orchid-Flowering Sweet Peas

A COLLECTION OF 12 VARIETIES, OUR SELECTION, 1 PKT. EACH FOR \$1, POSTPAID; 1 OZ. EACH FOR \$2.50, POSTPAID

*Afterglow. Violet-blue.
America. White, scarlet-striped.
Apple Blossom. Rose standard, wings bluish.
Asta Ohn. Lavender, tinged mauve.
Aurora. White, striped salmon.
Black Knight. Deep maroon.
Captain of the Blues. Bright blue.
Countess Spencer. Soft rose-pink.
Etta Dyke. White.
Florence Morse. Delicate blush-pink.

Florence Nightingale. Beautiful lavender.
George Herbert. Salmon-rose.
Helen Lewis. Orange-pink.
King Edward VII. Crimson.
*King White. White.
Othello. Rich, deep maroon.
Primrose. Soft, pale yellow.
Queen Alexandra. Bright scarlet.
*Rainbow. Ivory-white, flaked rose.
*Stirling Stent. Salmon-pink.
*Vermilion Brilliant. Scarlet self.

ANY OF THE ABOVE VARIETIES NOT MARKED *, PKT. 10 CENTS, OZ., 30 CENTS, ¼ LB. \$1.00, POSTPAID. THOSE MARKED *, PKT. 15 CTS., OZ. 50 CTS., POSTPAID.



Spencer Sweet Peas

Sweet Peas in Mixtures

In making up the following Mixtures of Sweet Peas, we take care not to put in too much of any one color, thus giving a genuinely good mixture.

Grandiflora. Pkt. 5 cts., oz. 10 cts., ¼ lb. 30 cts., ½ lb. 50 cts., lb., 95 cts., postpaid. | Spencer, or Giant Orchid-flowered. Pkt. 10 cts., oz. 25 cts., ¼ lb. 75 cts., lb. \$2.50, postpaid.

A Few Useful Insecticides

APHINE. A splendid and most popular Insecticide for destroying green, black, and white fly, thrip, red spider, and other greenhouse and outdoor insects. Use one part to forty parts of water. In cans, $\frac{1}{4}$ pt. 25c; $\frac{1}{2}$ pt. 40c; pt. 65c; qt. \$1.00.

ARSENATE OF LEAD PASTE. For spraying shrubs and trees against the attacks of all leaf-eating insects. A good preventive for codlin-moth. It is not injurious to the foliage and, being white, shows plainly where it has been applied. 1 pound to twenty-five gallons of water. Lb. 40 cts.

BORDEAUX MIXTURE. A splendid remedy for all fungous diseases, blight and mildew on plants and fruit. Dry, 5 ounces to one gallon of water. Lb. 35 cts. Liquid, 1 quart will make $\frac{1}{4}$ -barrel of spray. Qt. 50 cts.

HELLEBORE POWDER. For destroying slugs, worms, caterpillars, rose bugs, etc. Can be applied dry or dissolved, one ounce to three gallons of water. $\frac{1}{2}$ lb., 35c; lb., 60c. Price subject to change.

LEMON OIL. A very popular insecticide for destroying mealy bug, scale, thrip, and red spider. Mix one part to thirty or forty parts of water. $\frac{1}{2}$ pt. 30 cts., pt. 50 cts., qt. 90 cts.

LIME-SULPHUR SOLUTION. The best thing for San Jose scale. It must be applied when trees are in the dormant state, either in fall or early spring. Dilute one part to ten parts of water. $\frac{1}{2}$ gal. 45 cts., gal. 75 cts.

PARIS GREEN. For destroying potato bugs, codlin-moth, caterpillars and slugs. $\frac{1}{2}$ lb. 35 cts., lb. 65 cts.

SLUG-SHOT. An excellent powder for destroying rose bugs, cabbage worms, currant worms. Easily applied; non-poisonous. Lb. carton with perforated top, 20 cts., 5-lb. pkg. 50 cts.

TOBACCO DUST. For dusting on plants affected with aphids; also used on squash and melon vines. Lb. 10 cts., 5 lbs. 30 cts., 10 lbs. 55 cts.

Popular Collections of Annual Flower Seeds

Containing such things as are of easiest cultivation, and with a little care will award you with a *Beautiful Garden of Flowers from early Summer till late in the Fall*

12 Varieties, with full cultural directions, delivered free for 50c

1 PACKET EACH OF

Asters
Candytuft
Centaurea

Eschscholtzia
Cosmos
Poppy

Phlox Drummondii
Portulaca
Alyssum, Sweet

Zinnias, Double Mixed
Marigolds, Double, Mixed
Scabious, Mixed

25 Varieties, with full cultural directions, delivered free for \$1

1 PACKET EACH OF

Asters, Mixed
Alyssum, Sweet
Centaurea, Mixed
Clarkia, Mixed
Cosmos, Mixed
Eschscholtzia, Mixed
Linum rubrum

Larkspur
Morning-Glory, Mixed
Gaillardia, Mixed
Godetia, Mixed
Gypsophila
Kochia

Marigold, Mixed
Mignonette
Nasturtiums, Mixed
Petunia, Single, Mixed
Phlox, Mixed
Poppy, Mixed

Portulaca, Mixed
Scabious, Mixed
Sunflower
Sweet Peas, Mixed
Lupins, Mixed
Zinnias, Double, Mixed

As these are Special Offers, no discount is allowed.

Elliott's Collection of Vegetable Seeds

No. 1, for a small garden, with full cultural directions, \$1.25

1 PACKET EACH OF

Beans, Dwarf Green
Beans, Dwarf Wax
Beans, Bush Lima
Beet, Crimson Globe
Cabbage, Early

Carrot, Early
Corn, Golden Bantam
Cucumber
Lettuce

Onion
Parsley, Curled
Peas, Early
Radish

Squash
Tomato
Spinach
Turnip

Catalogue price, if purchased separately, \$1.55.

No. 2, 30 Varieties for \$4.50

CONTAINS THE FOLLOWING

1 lb. Beans, Dwarf Green
1 lb. Beans, Dwarf Wax
1 pkt. Beans, Bush Lima
1 pkt. Beans, Pole, Kentucky
1 pkt. Beet, Crimson Globe
1 pkt. Cabbage, Early
1 pkt. Cabbage, Late
1 pkt. Carrot, Early

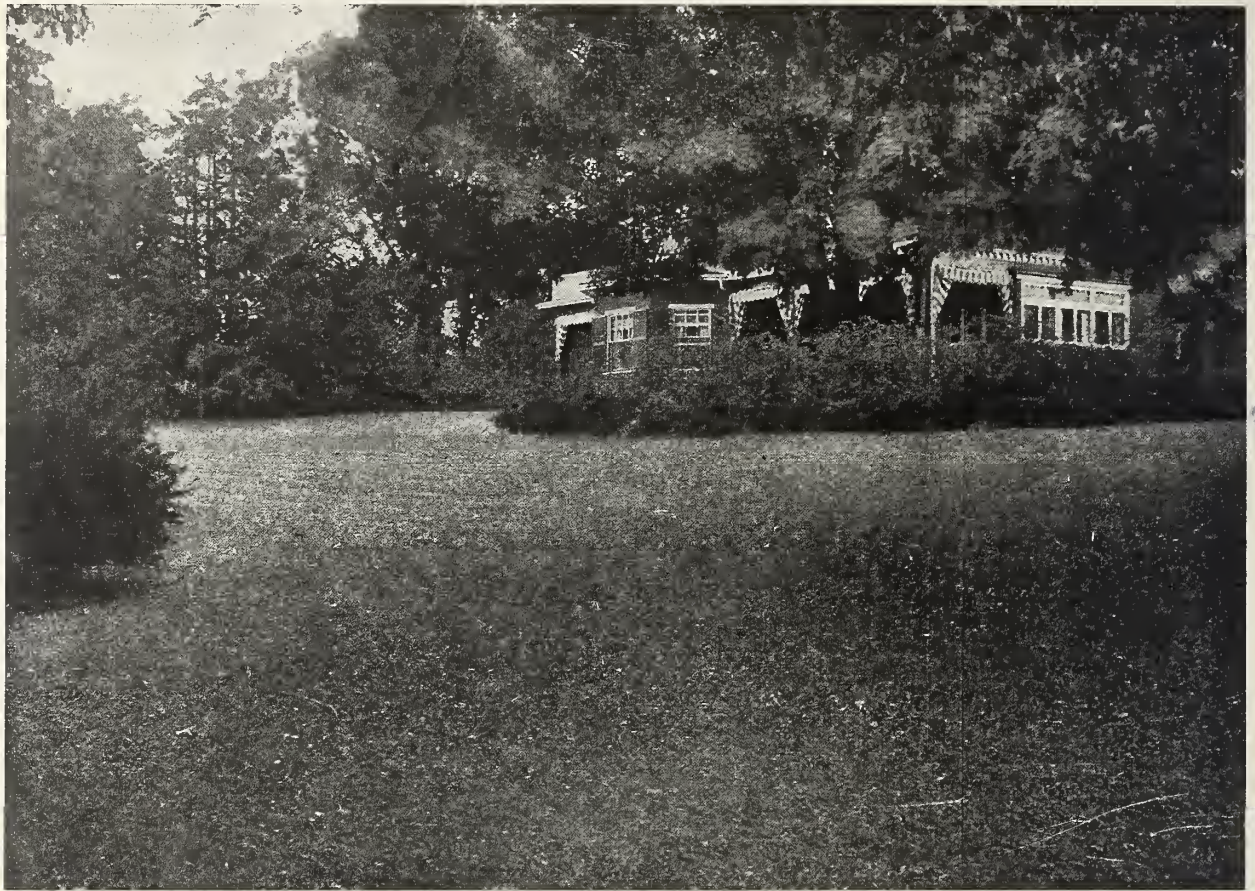
1 pkt. Cauliflower
1 pkt. Celery
1 pkt. Corn, Early
1 pkt. Corn, Late
1 pkt. Cucumber
1 pkt. Endive
1 pkt. Leek
1 pkt. Lettuce, Head

1 pkt. Lettuce, Loose-leaf
1 pkt. Melon, Musk
1 pkt. Melon, Water
1 pkt. Onion, Red
1 pkt. Onion, White
1 pkt. Parsley
1 lb. Peas, Early
1 lb. Peas, Late

1 oz. Radish, Round Red
1 oz. Radish, Long White
1 oz. Squash, Summer
1 oz. Spinach
1 pkt. Tomato
1 oz. Turnip, White

Catalogue price, if purchased separately, \$5.15.

These collections contain the very highest quality seed, selected from the kinds we catalogue. Customers, when ordering these collections, must understand that we make no changes whatsoever in the varieties or quantities. They must be purchased on these conditions, the purchaser paying delivery charges.



High-Grade Recleaned Lawn Seeds

Our various mixtures are composed of the finest recleaned seed, and of the highest purity and germination in each instance. We might mention that you can buy Lawn Seed at all prices. Our mixtures weigh 20 pounds to the bushel. We intend to carry only one grade, and that the best. We also consider, in making up our mixtures, the production of an immediate but permanent effect, by putting such varieties of grasses in our mixtures to produce this.

1 QUART OF LAWN SEED WILL SOW FROM 250 TO 300 SQUARE FEET.

SPRINGDALE VELVET LAWN SEED. A splendid mixture of fine-growing grasses, suitable for a regular lawn	Qt.	2 Qts.	4 Qts.	Pk.	Bu.
	\$0.30	\$0.55	\$1.00	\$1.25	\$6.00
SPRINGDALE SHADY LAWN SEED. Suitable for shady places, under trees, etc.....	.35	.65	1.25	2.00	7.00
SPRINGDALE TERRACE MIXTURE. Composed of varieties of grasses which make strong roots so as to bind the soil well and prevent it from washing out.....	.35	.65	1.25	2.00	7.00
WHITE CLOVER. For lawns.....	Per ½ lb., 40c; lb., 75c.				

Springdale Mixtures for Hay or Permanent Pasture

Good mixtures of grasses and clovers suitable for any soils or situations. Composed of best grade seeds only. When ordering, state whether for heavy or light soil, or whether required for pasture or hay. Sow three or four bushels to the acre. \$4.00 per bushel.

Lawn and Garden Fertilizers

BONE MEAL (Pure). 5 lbs., 35c; 10 lbs., 65c; 50 lbs., \$2.00; 100 lbs., \$3.25.

PULVERIZED SHEEP MANURE. 2 lbs., 20c; 5 lbs., 35c; 10 lbs., 60c; 25 lbs., \$1.00; 50 lbs., \$1.75; 100 lbs., \$3.00.

ELLIOTT NURSERY CO., Pittsburgh, Pa.